

SEL SERIES ELECTRIC TAILGATE SPREADER



INCLUDED IN THIS MANUAL:

Safety Instructions -----	3-5
Control Electric Specifications & Installation -----	6
Harness and Wiring Diagram -----	7-9
Trough mounting instructions-----	10-11
Spinner Assembly and Installation -----	12-14
Spinner Spread Pattern Instructions -----	15-16
Operating Instructions -----	17-18
Recommended Regular Maintenance -----	19
Assembly Parts Drawing & Parts List -----	21-28
Spinner Assembly Parts Drawing & Parts List -----	29-32
Name Plate Information -----	33
Warranty -----	34

SEL INSTALLATION AND OPERATING INSTRUCTION MANUAL

SAFETY PRECAUTIONS

The best safety device is a careful operator!



This symbol means **ATTENTION!**

Become Alert!

Your safety is involved!

Please read and understand completely before doing!

BEFORE PERFORMING MAINTENANCE OPERATIONS, PARK VEHICLE ON LEVEL GROUND. SET PARKING BRAKE, SHUT OFF ALL POWER, AND MAKE SURE ALL MOVEMENT HAS STOPPED. IF BODY IS RAISED, IT MUST BE SECURELY BLOCKED SO IT CANNOT COME DOWN. SUPPORT BLOCKS MUST NOT BE REMOVED UNTIL THERE IS NO DANGER OF ANYONE BEING UNDER BODY WHEN BODY IS LOWERED.



Improper use of this equipment can result in serious injury. To reduce this possibility, give complete and undivided attention to the job at hand, and follow these safety precautions.

PREPERATION:

Know your controls. Read this instruction manual. Learn how to stop the equipment quickly in an emergency.

Do not allow children to operate machine; nor adults to operate it without proper instructions.

Keep all individuals not involved in the use of the equipment a safe distance away.

A copy of this manual should be available in the cab at all times. A copy may be obtained from your local dealer or download from www.swensonspreader.com.

OPERATION:

Do not exceed rated capacities of chassis or hoist.

Observe and shut off all equipment controls before starting engine so equipment will not unintentionally operate when engine is started.

Always check area around machine before engaging or operating controls.

Vehicle should be on a flat surface prior to raising bed. Operation on slippery uneven terrain may result in equipment damage or personal injury.

Know the material you are hauling and plan your haul to avoid "set up" or freezing of the load in the dump body. In the event that a load becomes stuck or frozen in the body, do not abuse, overload, or damage the truck, hoist, or body in efforts to quickly free the load. It may be necessary to thaw indoors to safely remove such a load.

In the event that shoveling or mechanical means are used to free the stuck load, be sure the load is NOT hoisted and the tailgate, if opened, is secured properly before starting this effort. If hoisted, a stuck load, or portion, could release unexpectedly and cause injury to personnel or damage to the body, truck, or surroundings.

Some materials such as mud, or sludge, may shift easily when wet, resulting in increased tendency to overturn the truck on curves, unstable ground, or side slope situations. Reduce load size, speeds, and side slopes, and use care and planning to avoid this potential occurrence.

Unload the body and securely prop and block a raised body before any service, inspection, or repair work is started.

Be sure the PTO is disengaged before traveling. Failure to disengage the PTO from driving the pump/valve when in transit may allow the dump body to rise unintentionally. This may lead to loss of vehicle control, accidental injury and/or property damage.

Lift points are provided to safely lift body assembly. Never lift or handle loaded body, empty material prior to handling the body.

Always wear relatively tight and belted clothing when operating equipment. Loose jackets, shirts sleeves or other loose clothing should not be worn because of the danger of catching them in moving parts or controls.

Stop and inspect equipment if unusual movement, sounds, or noises are observed. Repair damage before restarting and operating the equipment.

Disengage power to all operating equipment: (1) before leaving operator's position, (2) before making any repairs or adjustments, or (3) when not in use.

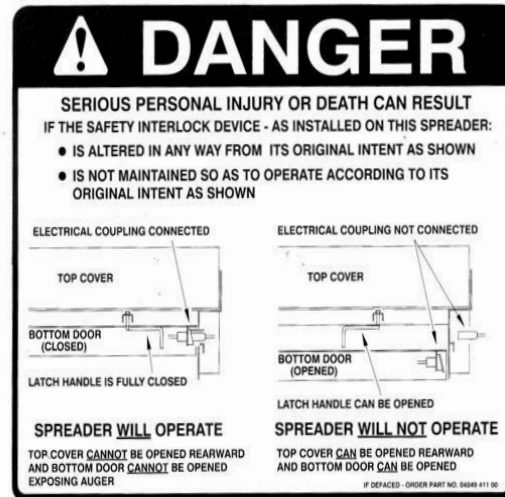
Take all possible precautions when leaving the equipment unattended; such as disengaging the hydraulic system, shifting vehicle out of gear, setting parking brake, shutting off engine and removing key. Never leave raised body unattended.

NOTICE!

Your spreader is equipped with a safety interlock device. This device must be disconnected before the spreader trough bottom door and the spreader trough top cover can be opened exposing the auger. This device positively disconnects all electric power from the auger drive motor to prevent accidental bodily injury due to contact with a turning auger.



This decal appears on the left end, or the right end of the spreader trough. It cautions all to observe general safety procedures when operating this equipment.



This decal appears on the back of the spreader cover plate at the right end of the spreader. It alerts all to the danger associated with the improper use of the Safety Interlock Device.



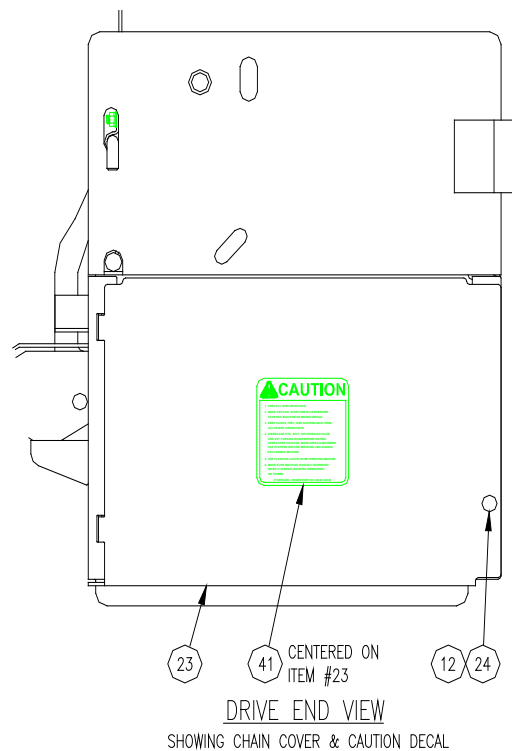
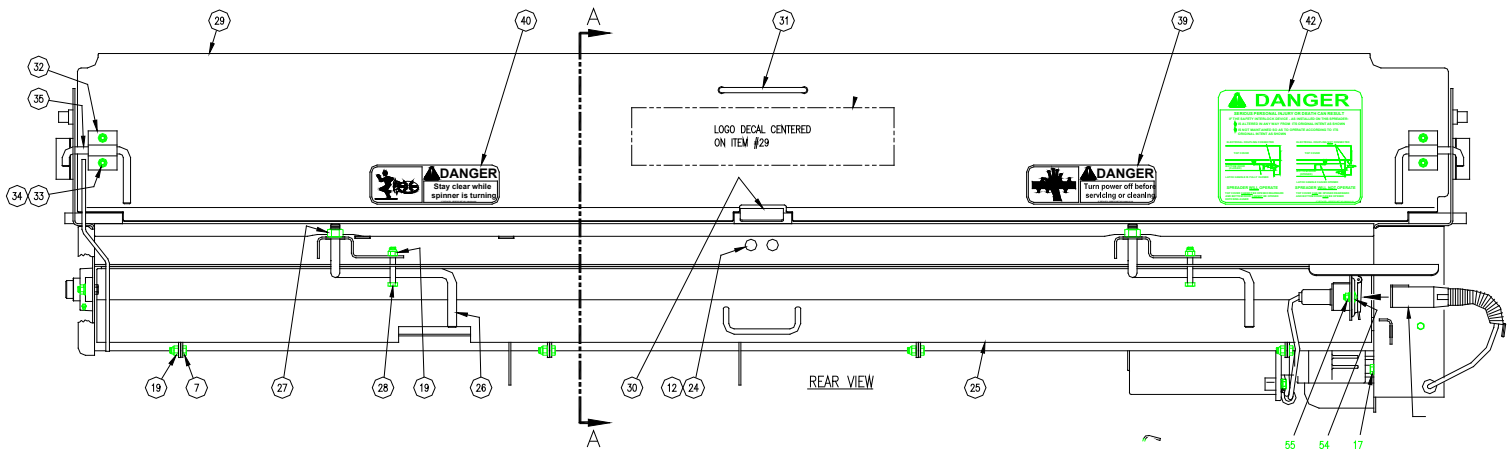
This decal appears on the back of the spreader trough cover plate. It alerts all to the danger of being caught in the dropout opening or from the top of the spreader trough where serious personal injury could result.



This decal appears near the spinner assembly on the back of the spreader trough cover plate. It alerts all to the danger of being struck by material being spread by the spinner assembly which could result in serious personal injury.

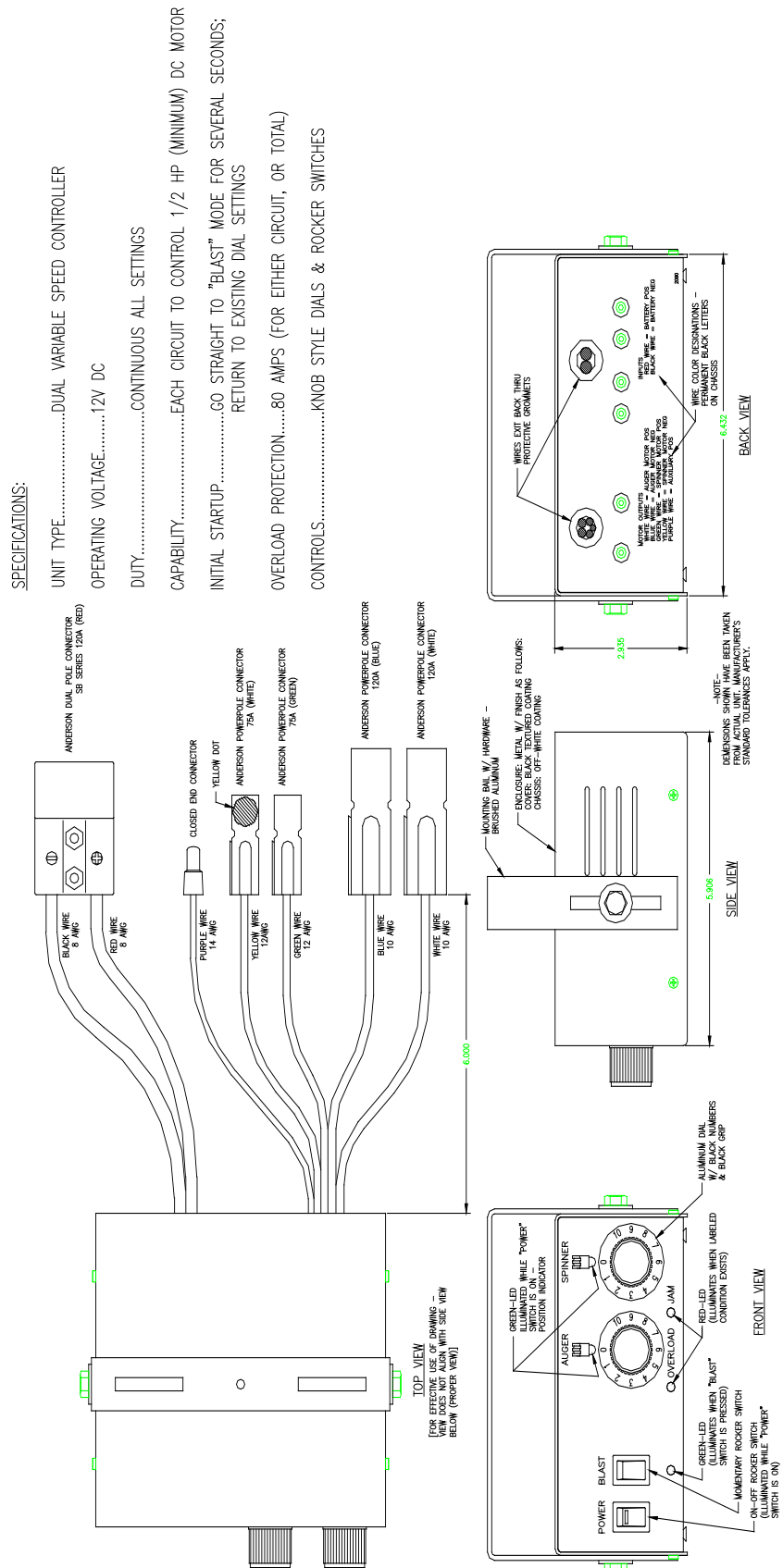
SEL INSTALLATION AND OPERATING INSTRUCTION MANUAL

SAFETY DECAL LOCATIONS



ITEM	PRODUCT	QTY	DESCRIPTION
39	04049-121-00	1	DECAL, DANGER (AUGER) (9 X 2 3/4")
40	04049-044-00	1	DECAL, DANGER (SPINNER) (9 X 2 3/4")
41	04049-045-00	1	DECAL, CAUTION (4 1/4 X 4 ")
42	04049-412-00	1	DECAL, SAFETY INTERLOCK ELEC.

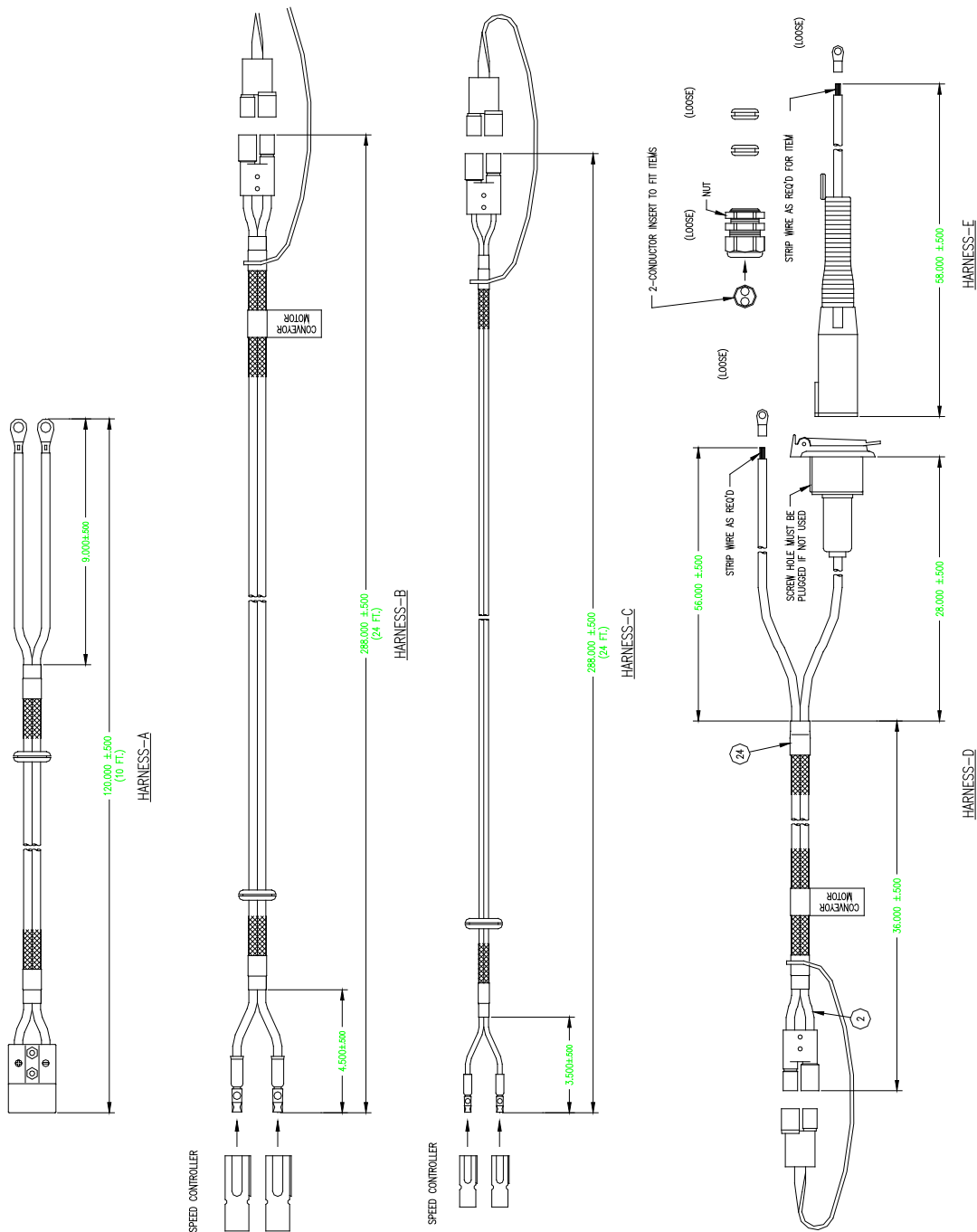
**ELECTRIC CONTROL SPECIFICATIONS
AND INSTALLATION**
ELECTRIC CONTROL PANEL 04623-008-00
W/ SYSTEM SPECIFICATIONS



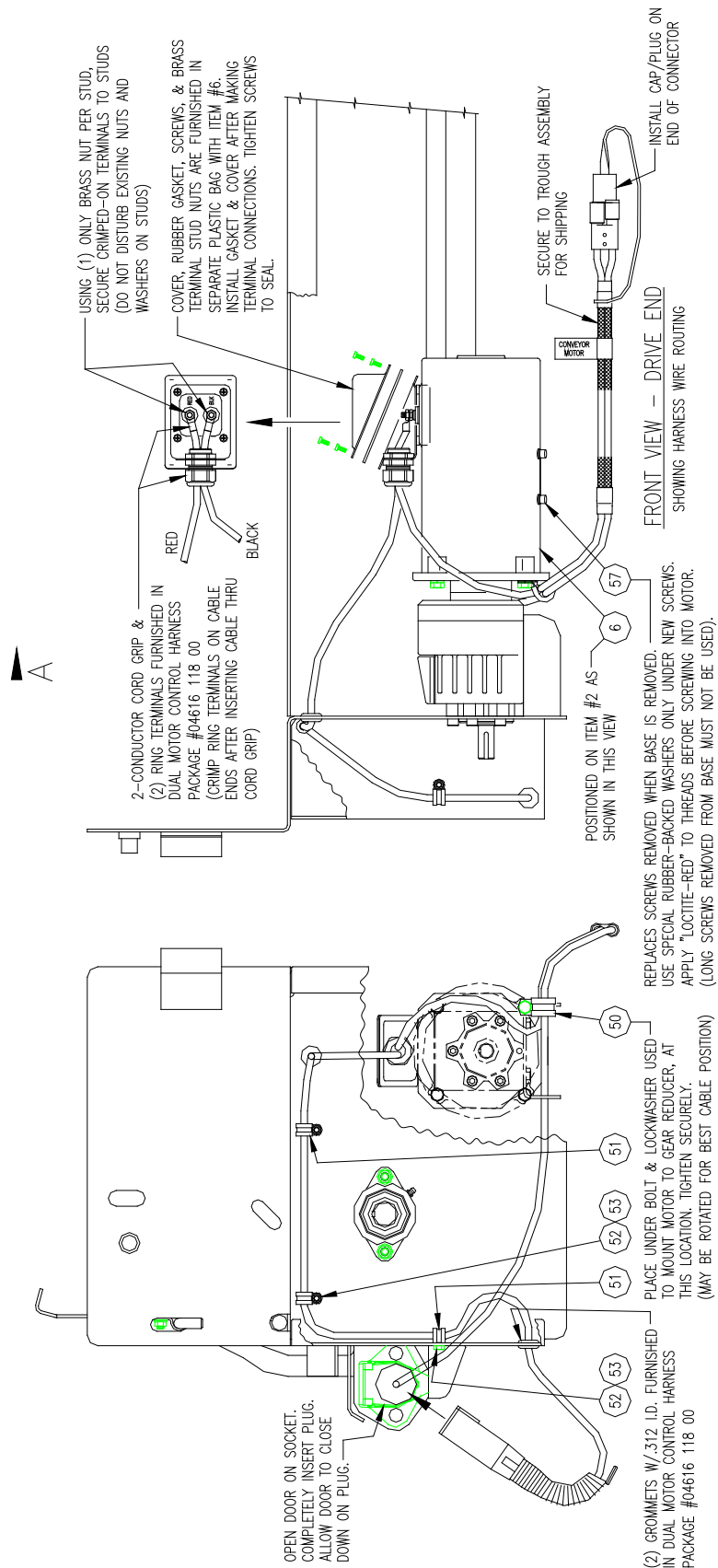
ELECTRIC CONTROL INSTALLATION (Continued)

ELECTRIC WIRING HARNESS

04616-118-00



DRIVE END VIEW WIRING HARNESS ROUTING 00122-320-05 (CS) 00122-320-06 (SS)



SEL INSTALLATION AND OPERATING INSTRUCTION MANUAL

PARTS LIST CONT'D

00122-320-05 (CS)

00122-320-05 (SS)

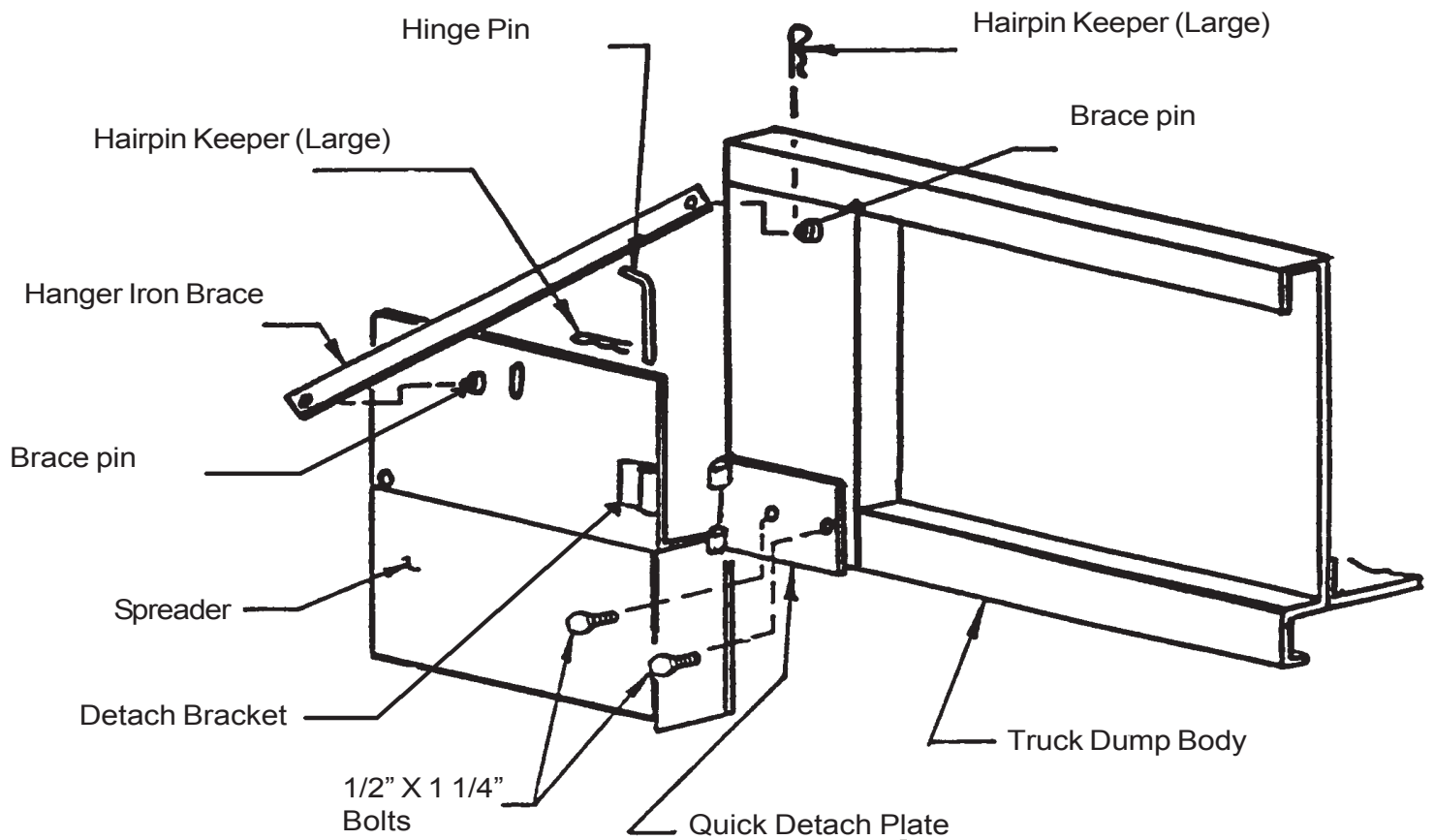
00122-320-07 (CS CENTER DROP)

00122-320-08 (SS CENTER DROP)

ITEM	PRODUCT	QTY	DESCRIPTION
6	04150-050-00	1	MOTOR, 12 V 1650RPM 60A 1/2 HP
50	04607-029-00	1	CLAMP, CUSHIONED 3/4" WIDE 1/2"
51	04607-024-00	3	CLAMP, CUSHIONED 3/8" LOOP SS
52 CS	04003-001-02	3	BOLT, 1/4-20 X 3/4" HH G5 ZP
SS	04003-001-11	3	BOLT, 1/4-20 X 3/4" HH SS
53 CS	04003-806-05	3	NUT, 5/16-18 SER FLANGE ZP
SS	04003-806-15	3	NUT, 5/16-18 SER FLANGE SS
57	04003-190-02	4	SCREW, M6--1.0 X 10 SCH SS

NOTES

TROUGH MOUNTING INSTRUCTIONS



TROUGH MOUNTING INSTRUCTIONS

(Continued)

GENERAL:

This spreader is designed to mount rigidly on the rear of the truck dump body, below the tailgate, and supported by brackets bolted to the rub rails of the dump body. Instructional drawing is included in this manual to show the details on page 11.

DANGER

Support spreader and other heavy components solidly when positioning for mounting on truck dump body.

IMPORTANT:

On occasion, due to improper handling during shipment or storage, the vertical ends of the trough get bent in or out slightly. Be sure these are square and true before installation. Once installed, the mounting brackets should prevent further deformation.

1. Position the spreader under the dump body tailgate with the auger drive housing to the right side of the truck. The trough lip on the forward side of the spreader should be as close as possible to the cross member under the floor of the dump body.

The tailgate of the dump body should lay down horizontally over the spreader, yet the spreader must be mounted up under the tailgate as high as possible.

2. Pin quick detach plates to spreader detach brackets.
3. Position quick detach plates against dump body cornerposts and clamp in a level position. Weld adequately to support loaded spreader trough. If bolting, is desired, drill (2) holes for 1/2" bolts simultaneously through bracket, cornerpost and bolt solidly.
4. Position hanger iron brace on brace pin located on spreader endplates.
5. Locate brace pins on dump body cornerposts approximately as shown using braces for exact positioning. (Braces may require bending for proper fit.)
6. Weld brace pins solidly to dump body, and retain braces at each end with hairpin keepers.
7. Carefully remove temporary spreader positioning apparatus.
8. If there is a gap between the trough lip and the dump body rear cross member, a "spillboard" of about 3/16" x 2" steel may be welded or bolted to the forward lip of the spreader to form a seal under the dump body floor. It may have to be notched or cut to fit around tailgate latches or other obstructions on the rear of the dump body.

SEL INSTALLATION AND OPERATING INSTRUCTION MANUAL

INSTALLATION OF SPINNER ASSEMBLY ON “SEL” SERIES SPREADERS

 **DANGER** SUPPORT SPINNER ASSEMBLY SOLIDLY WHEN MOUNTING ON SPREADER.

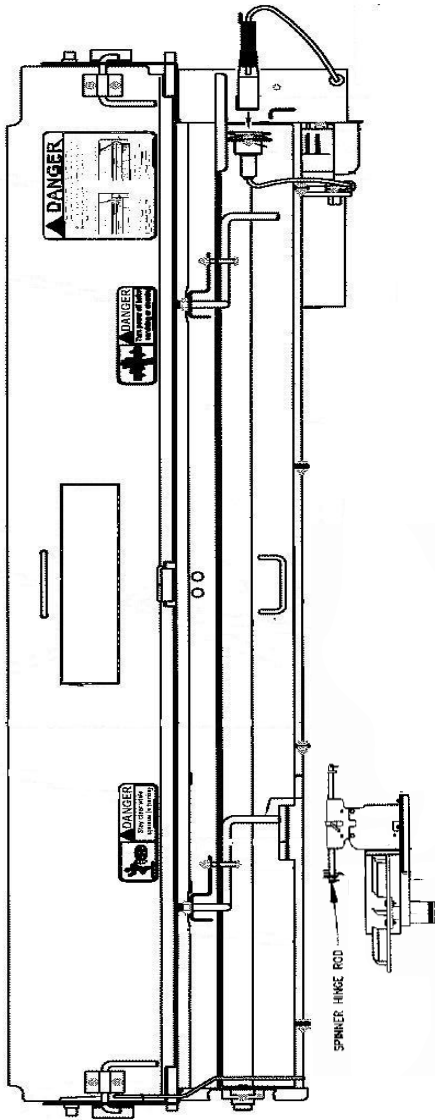
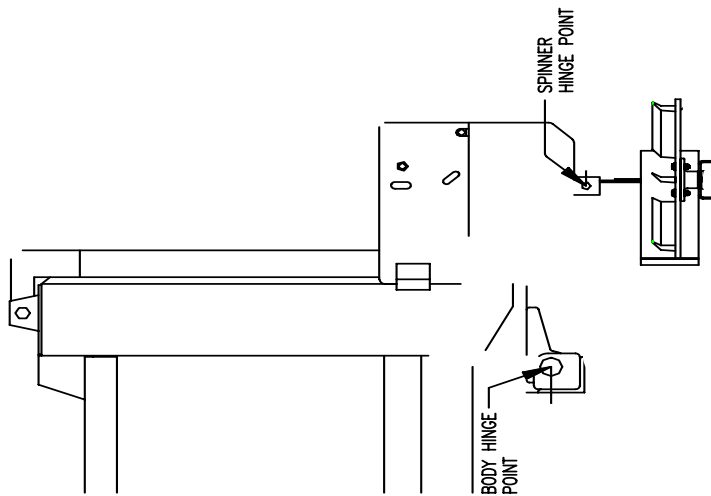
SPINNER ASSEMBLY PROCEDURE:

1. Attach spinner disc to hub with 5/16" x 1 1/2" bolts, flatwashers and flange nuts.
2. Apply anti-seize compound to spinner motor shaft.
3. Mount spinner disc/hub assembly on spinner motor shaft.
4. Secure disc/hub assembly to motor shaft with proper size hardware (provided). Bolt should engage threads in motor shaft a minimum of 3/8" when bolt is tight.
5. While holding lock collar in middle notch of spinner extension mounting bracket, slide spinner hinge rod through both the mounting bracket and lock collar.
6. Pin spinner carriage bracket to the trough and bottom door. Insert lynch pins

MOUNTING PROCEDURES:

TRUCK SHOULD BE ON LEVEL SURFACE.

1. Install spinner assembly on spreader by sliding the hinge rod into the mounting tabs on bottom door. Insert (2) keeper pins into hinge rod. Center and lock spinner assembly between mounting tabs.
2. Raise and lower dump body to check spinner ground clearances. Adjust spinner height if needed. Repeat step if adjustments are made.



This diagram to used as reference only

LEFT HAND (CCW) SPINNER ASSEMBLY
 S SPRINGS SPRINGER

ADJUSTING SPINNER FOR DESIRED SPREAD PATTERN



DANGER!

Serious personal injury can result from being caught in a turning spinner. Stay clear and keep all others clear when spinner is turning.

Serious personal injury can result if hit by flying particles being thrown by a turning spinner.

Stand back, and keep all others back at least 50 feet while spinner is turning. **DO NOT ASSUME** that particles cannot be thrown by a turning spinner just because material is not being dropped onto the spinner; particles that have been sticking to the spinner may suddenly come loose and be thrown causing possible injury.

In general, for the most commonly desired spread patterns, the material drop zone should be **over forward half** and **within outside edge of disc**. See below and next page. Adjusting the specific location where material falls on the forward half of the spinner disc is very important. This allows the greatest portion of the material to be placed on the road surface in the three most commonly desired locations:
1. To the left of the vehicle. 2. To the left and rear of the vehicle. 3. To the rear and right of the vehicle.

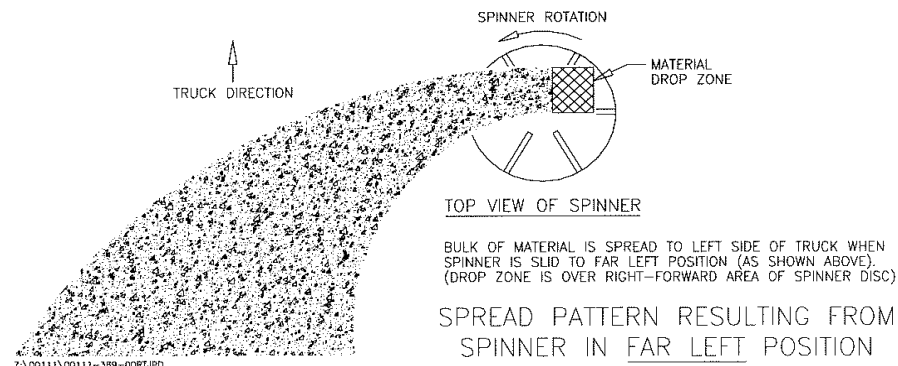
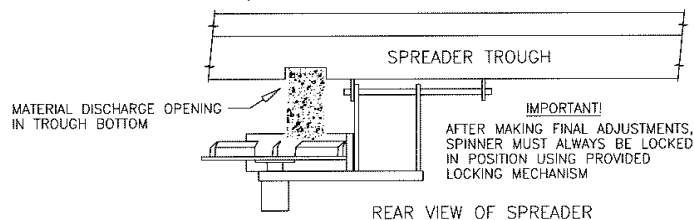
The spinner shield which is positioned approximately at the right forward quadrant of the spinner disc, is intended to restrict "stray" material to the spinner area and to aid in a more defined spread pattern.

Once the desired spread pattern has been obtained, increasing the spinner speed by opening the spinner control knob will give a wider spread pattern, and closing the spinner control knob will give a narrower spread pattern.

It should be noted that the spread pattern width will vary as the dump body is raised and lowered during spreading operations. This is due to the spinner becoming closer to the road surface as the body is raised, and farther away from the road surface as the body is lowered. A higher spinner assembly above the road surface will give a wider spread pattern, and a lower spinner assembly above the road surface will give a narrower spread pattern. When establishing spread pattern width, raise the body to the dump angle normally used during spreading operations, and have the spinner control knob at the setting normally used during spreading operations.

Sliding the spinner to intermediate positions from those shown below and on the following page will give variations of spread patterns to those shown. After establishing the desired spread pattern, it is suggested that the spinner position on the hinge rod, the dump body angle, and the valve spinner control setting be recorded for future use.

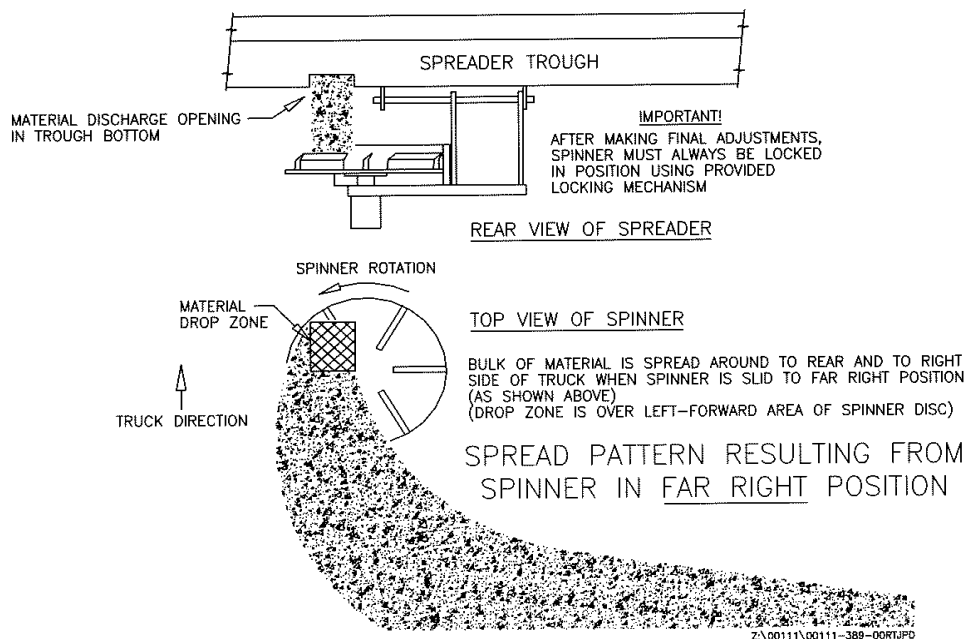
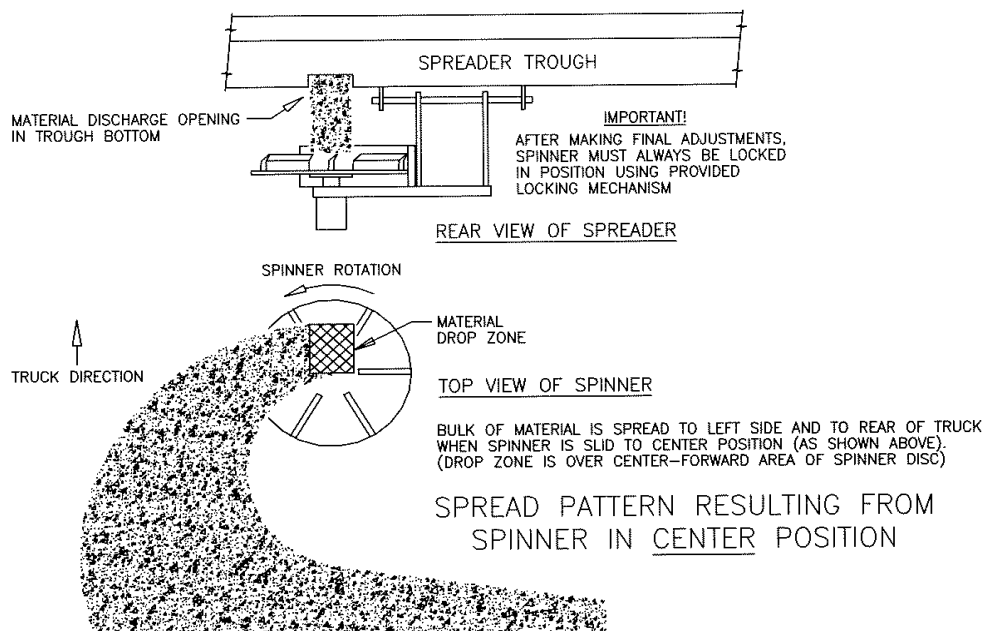
IMPORTANT! After making final adjustments, the spinner assembly must always be locked in position using the provided locking mechanism.



BULK OF MATERIAL IS SPREAD TO LEFT SIDE OF TRUCK WHEN SPINNER IS SLID TO FAR LEFT POSITION (AS SHOWN ABOVE). (DROP ZONE IS OVER RIGHT-FORWARD AREA OF SPINNER DISC)

SPREAD PATTERN RESULTING FROM SPINNER IN FAR LEFT POSITION

Spread pattern adjustment, cont'd



OPERATING INSTRUCTIONS



DANGER

1. WHEN STARTING UP NEW EQUIPMENT, BE SURE EVERYONE IS STANDING CLEAR, WATCH FOR ANYTHING THAT MAY REQUIRE SHUTTING SYSTEM DOWN. EQUIPMENT MUST BE STARTED UP SLOWLY AND WATCHED FROM A SAFE DISTANCE. WATCH FOR ANYTHING THAT MAY BE HITTING SOMETHING THAT IT SHOULD NOT BE HITTING, AND LISTEN FOR SOUNDS THAT ARE ABNORMAL. CORRECT ANYTHING THAT IS ABNORMAL BEFORE CONTINUING USE OF THE EQUIPMENT.
2. BEFORE INSTALLATION, MAINTENANCE, CLEANING, OR REMOVAL OF SPREADER, ALL ELECTRICAL CONNECTIONS MUST BE DISCONNECTED

INITIAL START UP:

This spreader is equipped with a electrical safety interlock device designed to interrupt electrical flow to the auger motor when disconnected. The spreader is shipped with the interlock device in the disconnected position and must be connected for operating the spreader.

1. Connect electrical harnesses to safety interlock, spreader and spinner.
2. Keep auger and spinner knobs on controller to zero position.
3. Push power switch to "ON" position.
4. Examine auger and spinner to see if they are functioning properly. (They will be operating slowly.)
(Left hand mounted spinner should turn in CCW rotation as viewed from above spinner.,
Auger should turn in direction which makes auger flitting appear to move towards trough dropout opening.)
5. Open control knobs to other positions and check to see if spinner and auger operate faster as knobs are opened, and slower as knobs are closed.
6. Open knobs to other positions and check to see if spinner and auger operate faster as knobs are adjusted.
7. Shut power switch to off

OPERATING INSTRUCTIONS

(Continued)

PREPARING SPREADER FOR USE:

1. Position spreader cover plate vertically and secure with latches.
2. With dump body empty, unlatch dump body tailgate from bottom and open as wide as possible but not bearing against cover plate, set the stop (or spread) chains.
3. Loosen spinner lock and slide spinner assembly to far left and retighten lock. (Position for spreading three or four lane highway from right lane.)
4. Put spreading material in dump body and raise dump body to fill spreader trough.
5. Lower dump body to safe position.
6. Press controller power switch to "ON" position. Spread small amount of material to determine placement of material at various spinner and auger speeds with spinner in this far left position.
7. Press controller switch to "OFF" position and shut off truck engine.
8. Loosen spinner lock and slide spinner assembly to far right and retighten lock. (Position for spreading behind truck and to extreme right covering up to four lanes from left lane.)
9. Start truck engine.
10. Press controller switch to "ON" position. Spread small amount of material to determine placement of material at various spinner and auger speeds with spinner in this far right position.
11. It should now be visible that various spread patterns may be obtained by placing spinner at various positions from left to right, and by changing spinner speeds on valve.

OPERATING SPREADER:

1. For operating electrical system, follow same procedures as for preparing spreader for use.
2. Any speed knob setting changes may be made while truck is in motion.
3. Spinner and auger may be stopped at the same time, without changing their valve settings, by pressing power switch to "OFF" position.
4. For normal use of dump truck, cover plate may be laid flat over spreader trough and locked in place. Dump body tailgate may be opened from top or bottom.
5. When using truck for normal hauling and dumping, it is recommended that electrical safety interlock be disconnected. Push dust cap onto disconnect.
6. Refer to safety interlock danger decal on trough cover plate for proper use of safety interlock.
7. To avoid spinner damage, spinner may be removed when truck is used for extensive hauling. Protect electric disconnects with appropriate plugs and caps.

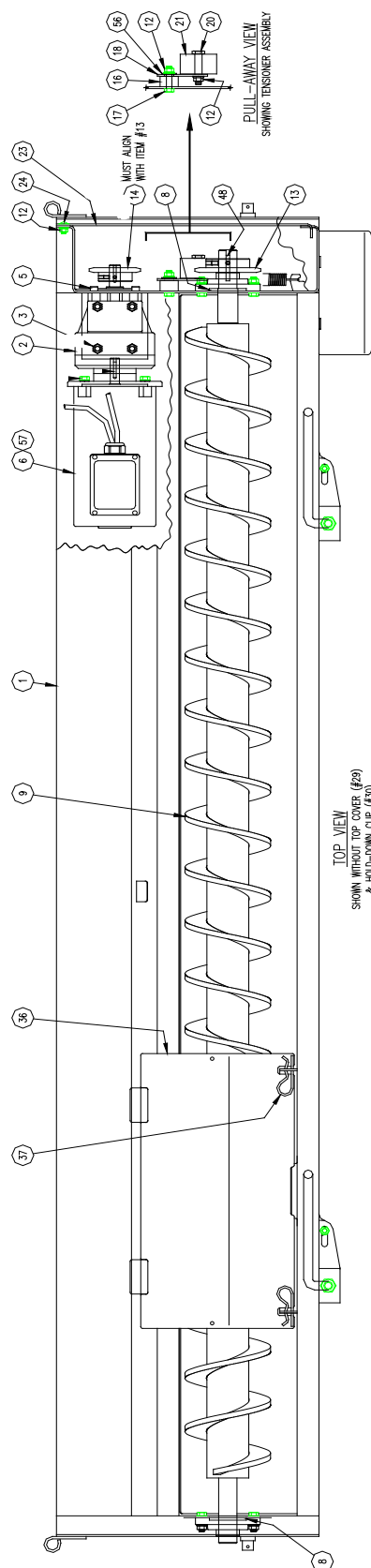
DANGER

SERIOUS PERSONAL INJURY CAN RESULT FROM BEING CAUGHT IN A TURNING AUGER, A TURNING SPINNER, OR OTHER OPERATING TRUCK EQUIPMENT. BEFORE PERFORMING MAINTENANCE OPERATIONS, PARK VEHICLE ON LEVEL GROUND. SET PARKING BRAKE, SHUT OFF ALL POWER, AND SHUT OFF TRUCK ENGINE. ALWAYS REPLACE SHIELDS AND COVERS WHEN MAINTENANCE IS COMPLETE.

1. Clean electrical plugs before taking apart or connecting.
2. Protect electrical plugs while in use and after taking apart with dust caps or other suitable protection.
3. Auger bearing requires periodic greasing every 15 hours of use and more frequent greasing during periods of greater use.
4. Greasing spinner hinge rod at support pivot points is suggested.
5. Hosing down and cleaning spreader after each use, and repainting or oiling after each season will greatly prolong spreader life. To open bottom door and top cover, disconnect electrical safety interlock and pivot around to end of spreader.
6. Spreader trough should be completely emptied after each use during severe cold weather to prevent material from freezing around auger.

PARTS LISTING

**TOP VIEW SHOWN WITHOUT TOP COVER-
ER
AND HOLD DOWN CLIPS
00122-320-05 (CS)
00122-320-06 (SS)
00122-320-07 (CS CENTER DROP)
00122-320-08 (SS CENTER DROP)**



SEL INSTALLATION AND OPERATING INSTRUCTION MANUAL

PARTS LIST

00122-320-05 (CS)

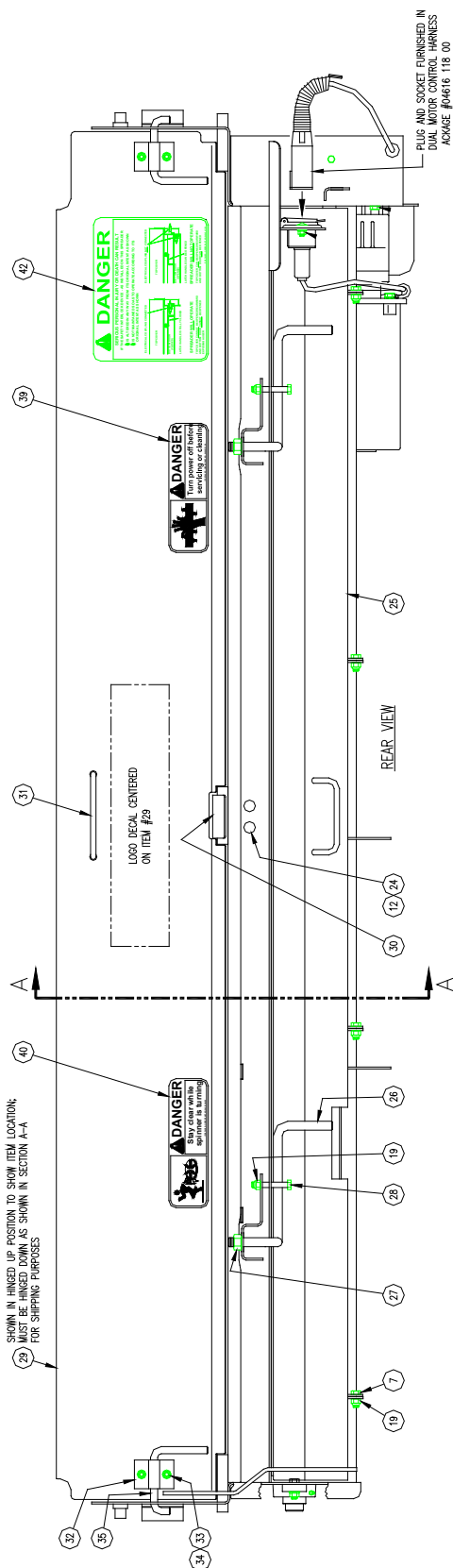
00122-320-06 (SS)

00122-320-07 (CS CENTER DROP)

00122-320-08 (SS CENTER DROP)

ITEM	PART NUMBER	QTY	DESCRIPTION
1 CS	00122-240-05	1	WELD, TROUGH, 10G CS
CS C/D	00122-240-07	1	WELD, TROUGH, 10 GA CS CENTER DROP
SS	00122-240-06	1	WELD, TROUGH 10 G S2
SS C/D	00122-240-08	1	WELD, TROUGH, 10 GA S2 CENTER DROP
2	04132-143-00	1	REDUCER, GEAR 29.4:1
3	04003-189-04	4	BOLT, M10-1.5 X 20 SCH SS
5	04003-190-01	5	SCREW, M8-1.25 X 20 SCH SS
6	04105-050-00	1	MOTOR, 12 V 1650 RPM 60 A 1/2 HP
8	04005-002-00	1	WASHER, FELT 1 1/4" ID X 2 1/2" OD
9	00117-120-00	1	WELD, AUGER, SA (2 1/2" TUBE)
	00117-120-00	1	WELD, AUGER, SA (2 1/2" TUBE) CENTER DROP
12 CS	04003-806-02	9	NUT, 3/8-16 SER FLANGE ZP
SS	04003-806-12	9	NUT, 3/8-16 SER FLANGE SS
13	04041-126-00	1	SPROCKET, 50BL21-1 1/4" BORE
14	04041-127-00	1	SPROCKET, 50BL16-3/4" BORE
16	04008-014-02	1	BUSHING, TENSIONER STANDOFF S3
17 CS	04003-003--05	1	BOLT, 3/8-16 X 1 1/2" HH G5 ZP
SS	04003-003-28	1	BOLT, 3/8-16 1 1/2" HH SS
18 CS	00122-259-01	1	PLATE, WHEEL TENSIONER 10G CS
SS	00122-259-03	1	PLATE, WHEEL TENSIONER 10G S2
20	04003-090-01	1	BOLT, SHOULDER 1/2 X 1 1/2" HH
21	04622-078-00	1	ROLLER, THNSIONER UHMW
23 CS	00122-263-01	1	COVER, CHAIN 10G CS
SS	00122-263-03	1	COVER, CHAIN 10G S2
24 CS	04003-033-01	3	BOLT, 3/8-16 X 3/4" CA G5 ZP
SS	04003-033-12	3	BOLT, 3/8-16 X 3/4" CA SS
36 CS	00122-249-01	1	COVER, ANTI-FLOW 10G CS
SS	00122-249-03	1	COVER, ANTI-FLOW 10G S2
37 CS	04011-001-02	2	KEEPER, HAIRPIN LARGE
SS	04011-001-04	2	KEEPER, HAIRPIN LARGE SS
48	04031-008-00	1	KEY, 1/4: SQ. X 1 1/4"
56 CS	04003-002-08	1	FLATWASHER, 3/8" U.S.S. ZP
SS	04003-002-20	1	FLATWASHER, 3/8" U.S.S. SS
57	04003-190-02	4	SCREW, M6-1.0 X 10 SCH SS

REAR VIEW
00122-320-05 (CS)
00122-320-06 (SS)
00122-320-07 (CS CENTER DROP)
00122-320-08 (SS CENTER DROP)



SEL INSTALLATION AND OPERATING INSTRUCTION MANUAL

PARTS LIST CONT'D

00122-320-05 (CS)

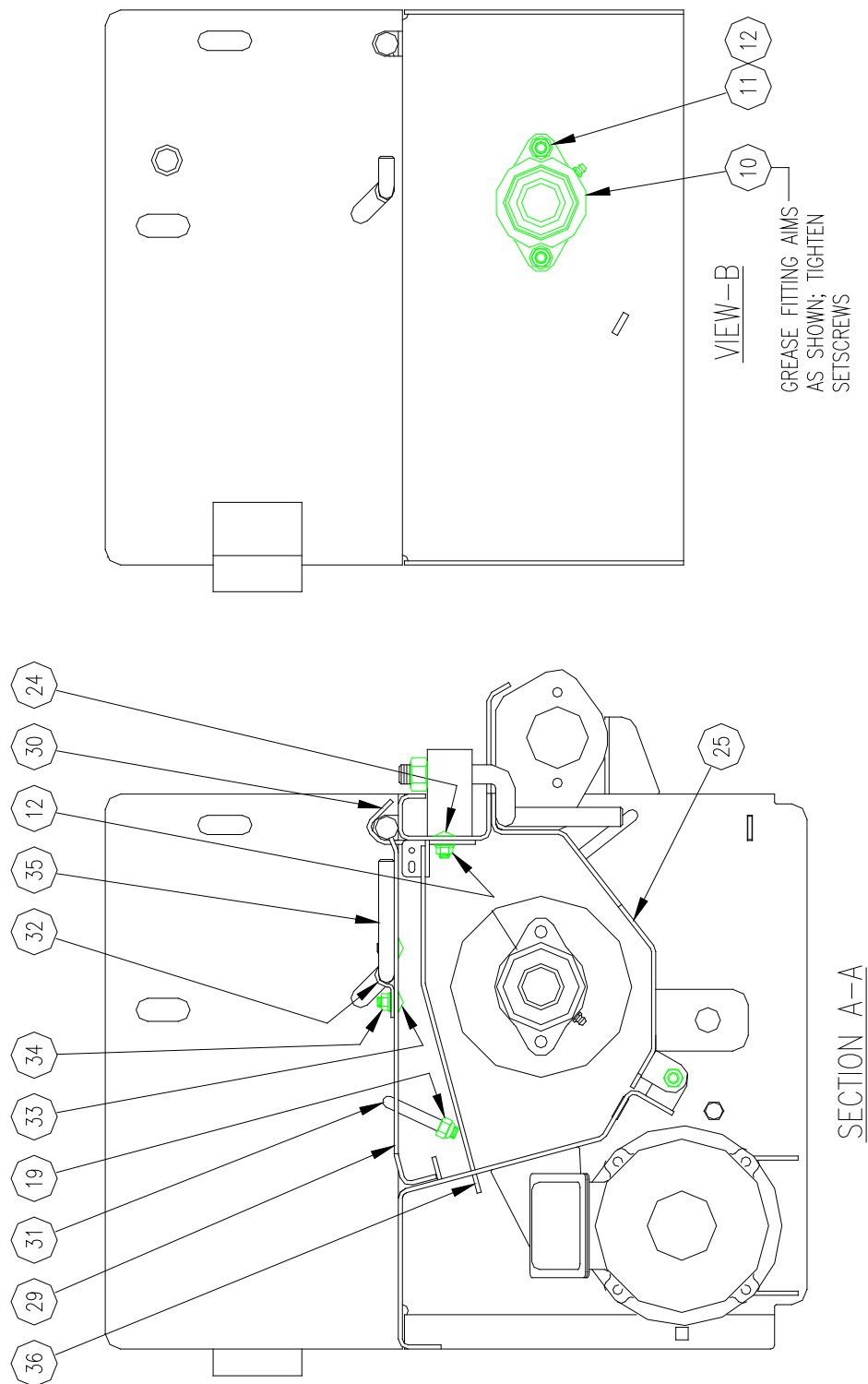
00122-320-06 (SS)

00122-320-07 (CS CENTER DROP)

00122-320-08 (SS CENTER DROP)

ITEM	PART NUMBER	QTY.	DESCRIPTIONS
7 CS	04003-003-03	4	BOLT, 3/8-16 X 1 HH G5 ZP
SS	04003-003-20	4	BOLT, 3/8-16 X 1 HH SS
12 CS	04003-806-02	9	NUT, 3/8-16 SER FLANGE ZP
SS	04003-806-12	9	NUT, 3/8-16 SER FLANGE SS
17 CS	04003-003-05	1	BOLT, 3/8-16 X 1 1/5" HH G5 ZP
SS	04003-003-28	1	BOLT, 3/8-16 X 1 1/2" HH SS
19 CS	04003-80 -02	8	LOCKNUT, 3/8-16 NI ZP
SS	04003-80 -08	8	LOCKNUT, 3/8-16 NI SS
24 CS	04003-033-01	3	BOLT, 3/8-16 X 3/4" CA G5 ZP
SS	04003-033-12	3	BOLT, 3/8-16 X 3/4" CA SS
25 CS	00122-247-05	1	WELD, BOTTOM DOOR 10 G CS
CS C/D	00122-247-07	1	WELD, BOTTOM DOOR, 10G CD CENTER DROP
SS	00122-247-06	1	WELD, BOTTOM DOOR 10G SS
SS C/D	00122-247-08	1	WELD, BOTTOM DOOR 10G SS CENTER DROP
26	00119-664-01	2	LATCH, BOTTOM DOOR CS
	00119-664-02	2	LATCH, BOTTOM DOOR S3
27 CS	04003-807-12	2	LOCKNUT, 5/8-11 TOP LOCK ZP
SS	04003-807-22	2	LOCKNUT, 5/8-11 TOP LOCK SS
28 CS	04003-003-08	2	BOLT, 3/8-16 X 2 1/2" HH G5 ZP
SS	04003-003-21	2	BOLT, 3/8-16 X 2 1/2" HH SS
29 CS	00122-337-03	1	WELD, TOP COVER 10G CS
SS	00122-337-04	1	WELD, TOP COVER 10G S2
30 CS	00119-669-04	1	CLIP, HOLD-DOWN 10 G CS
SS	00119-669-06	1	CLIP, HOLD-DOWN 10 G S2
31 CS	00119-665-01	1	HANDLE, LIFT CS
SS	00119-665-02	1	HANDLE, LIFT S3
32	00115-060-01	2	BRACKET, S2
33	04003-032-07	4	BOLT, 5/16-18 X 5/8" CA SS
34	04003-806-13	4	NUT, 5/16-18 SER FLANGE SS
35 CS	00106-315-00	2	FORMING, HANDLE, ZP
SS	00109-360-00	2	HANDLE, SS
39	04049-121-00	1	DECAL, DANGER (AUGER)
40	04049-044-00	1	DECAL, DANGER (SPINNER)
42	04049-411-00	1	DECAL, SAFETY INTERLOCK ELECTRIC
54 CS	04003-032-05	2	BOLT, 5/16-18 X 3/4" CA G5 ZP
SS	04003-032-06	2	BOLT, 5/16-18 X 3/4" CA SS
55	04003-806-01	2	NUT, 5/16-18 X 3/4" CA G5 ZP
	04003-806-13	2	NUT, 5/16-18 X 3/4" CA SS

**CROSS SECTIONAL VIEW
(REAR VIEW SECTION A-A)
END PLATE VIEW**
00122-320-05 (CS)
00122-320-06 (SS)
00122-320-07 (CS CENTER DROP)
00122-320-08 (SS CENTER DROP)



SEL INSTALLATION AND OPERATING INSTRUCTION MANUAL

PARTS LIST CONT'D

00122-320-05 (CS)

00122-320-06 (SS)

00122-320-07 (CS CENTER DROP)

00122-320-08 (SS CENTER DROP)

ITEM	PART NUMBER	QTY	DESCRIPTION
10	04080-005-00	2	BEARING, 1 1/4"
11 CS	04003-003-04	4	BOLT, 3/8-16 Z 1 1/4" HH G5 ZP
SS	04003-003-26	4	BOLT, 3/8-16 X 1 1/4" HH SS
12 CS	04003-806-02	9	NUT, 3/8-16 SER FLANGE ZP
SS	04003-806-12	9	NUT, 3/8-16 SER FLANGE SS
19 CS	04003-804-02	8	LOCKNUT, 3/8-16 NI ZP
SS	04003-804-08	8	LOCKNUT, 3/8-16 NI SS
24 CS	04003-033-01	3	BOLT, 3/8-16 X 3/4" CA G5 ZP
SS	04003-033-12	3	BOLT, 3/8-16 X 3/4" CA SS
29 CS	00122-337-03	1	WELD, TOP COVER 10G CS
SS	00122-337-04	1	WELD, TOP COVER 10G S2
30 CS	00119-669-04	1	CLIP, HOLD-DOWN 10 G CS
SS	00119-669-06	1	CLIP, HOLD-DOWN 10 G S2
31 CS	00119-665-01	1	HANDLE, LIFT CS
SS	00119-665-02	1	HANDLE, LIFT S3
32	00115-060-01	2	BRACKET, S2
33	04003-032-07	4	BOLT, 5/16-18 X 5/8" CA SS
34	04003-806-13	4	NUT, 5/16-18 SER FLANGE SS
35 CS	00106-315-00	2	FORMING, HANDLE, ZP
SS	00109-360-00	2	HANDLE, SS
36 CS	00122-249-01	1	COVER, ANTI-FLOW 10 G CS
SS	00122-249-03	1	COVER, ANTI-FLOW 10G S2

SEL INSTALLATION AND OPERATING INSTRUCTION MANUAL

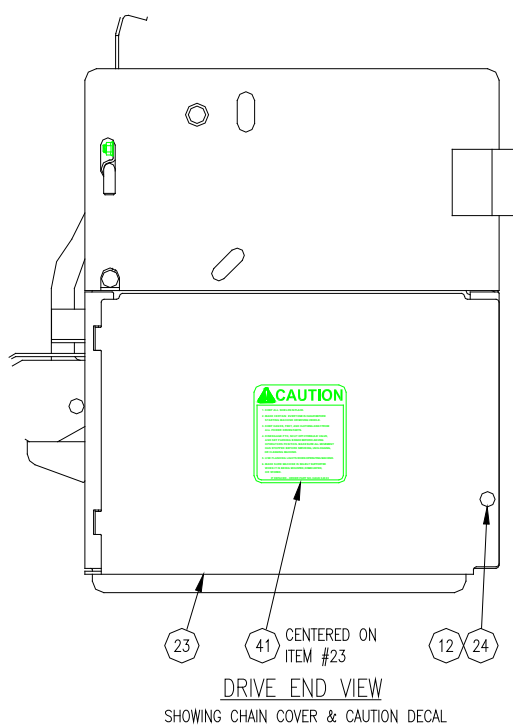
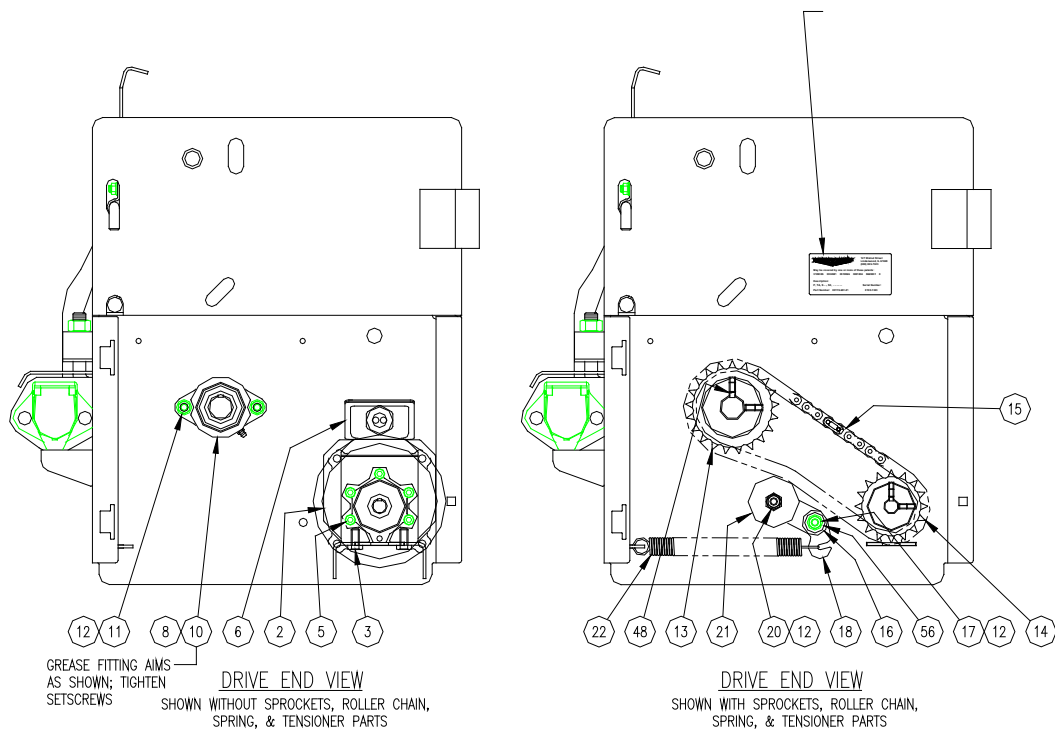
DRIVE END VIEW

00122-320-05 (CS)

00122-320-06 (SS)

00122-320-07 (CS CENTER DROP)

00122-320-08 (SS CENTER DROP)



SEL INSTALLATION AND OPERATING INSTRUCTION MANUAL

PARTS LIST CONT'D

00122-320-05 (CS)

00122-320-06 (SS)

00122-320-07 (CS CENTER DROP)

00122-320-08 (SS CENTER DROP)

ITEM	PRODUCT	QTY	DESCRIPTION
2	04132-143-00	1	REDUCER, GEAR 29.4:1
3	04003-189-04	4	BOLT, M10-1.5 X 20 SCH SS
5	04003-190-01	5	SCREW, M8-1.25 X 20 SCH SS
6	04105-050-00	1	MOTOR, 12 V 1650 RPM 60 A 1/2 HP
8	04005-002-00	1	WASHER, FELT 1 1/4" ID X 2 1/2" OD
10	04080-005-00	2	BEARING, 1 1/4"
11 CS	04003-003-04	4	BOLT, 3/8-16 Z 1 1/4" HH G5 Z
SS	04003-003-26	4	BOLT, 3/8-16 X 1 1/4" HH SS
12 CS	04003-806-02	9	NUT, 3/8-16 SER FLANGE ZP
SS	04003-806-12	9	NUT, 3/8-16 SER FLANGE SS
13	04041-126-00	1	SPROCKET, 50BL21-1 1/4" BORE
14	04041-127-00	1	SPROCKET, 50BL16-3/4" BORE
15	04046-001-11	1	HAIN, ROLLER #50-48 PITCH W/C
16	04008-014-02	1	BUSHING, TENSIONER STANDOFF S3
17 CS	04003-003-05	1	BOLT, 3/8-16 X 1 1/5" HH G5 ZP
SS	04003-003-28	1	BOLT, 3/8-16 X 1 1/2" HH SS
18 CS	00122-259-01	1	PLATE, WHEEL TENSIONER 10G CS
SS	00122-259-03	1	PLATE, WHEEL TENSIONER 10G S2
20	04003-090-01	1	BOLT, SHOULDER 1/2 X 1 1/2" HH
21	04622-078-00	1	ROLLER, THNSIONER UHMW
22	04091-048-00	1	SPRING, EXTENSION 6"
23 CS	00122-263-01	1	COVER, CHAIN 10G CS
SS	00122-263-03	1	COVER, CHAIN 10G S2
24 CS	04003-033-01	3	BOLT, 3/8-16 X 3/4" CA G5 ZP
SS	04003-033-12	3	BOLT, 3/8-16 X 3/4" CA SS
41	04049-045-00	1	DECAL, CAUTION
48	04031-008-00	1	KEY, 1/4: SQ. X 1 1/4"
56 CS	04003-002-08	1	FLATWASHER, 3/8" U.S.S. ZP
SS	04003-002-20	1	FLATWASHER, 3/8" U.S.S. SS

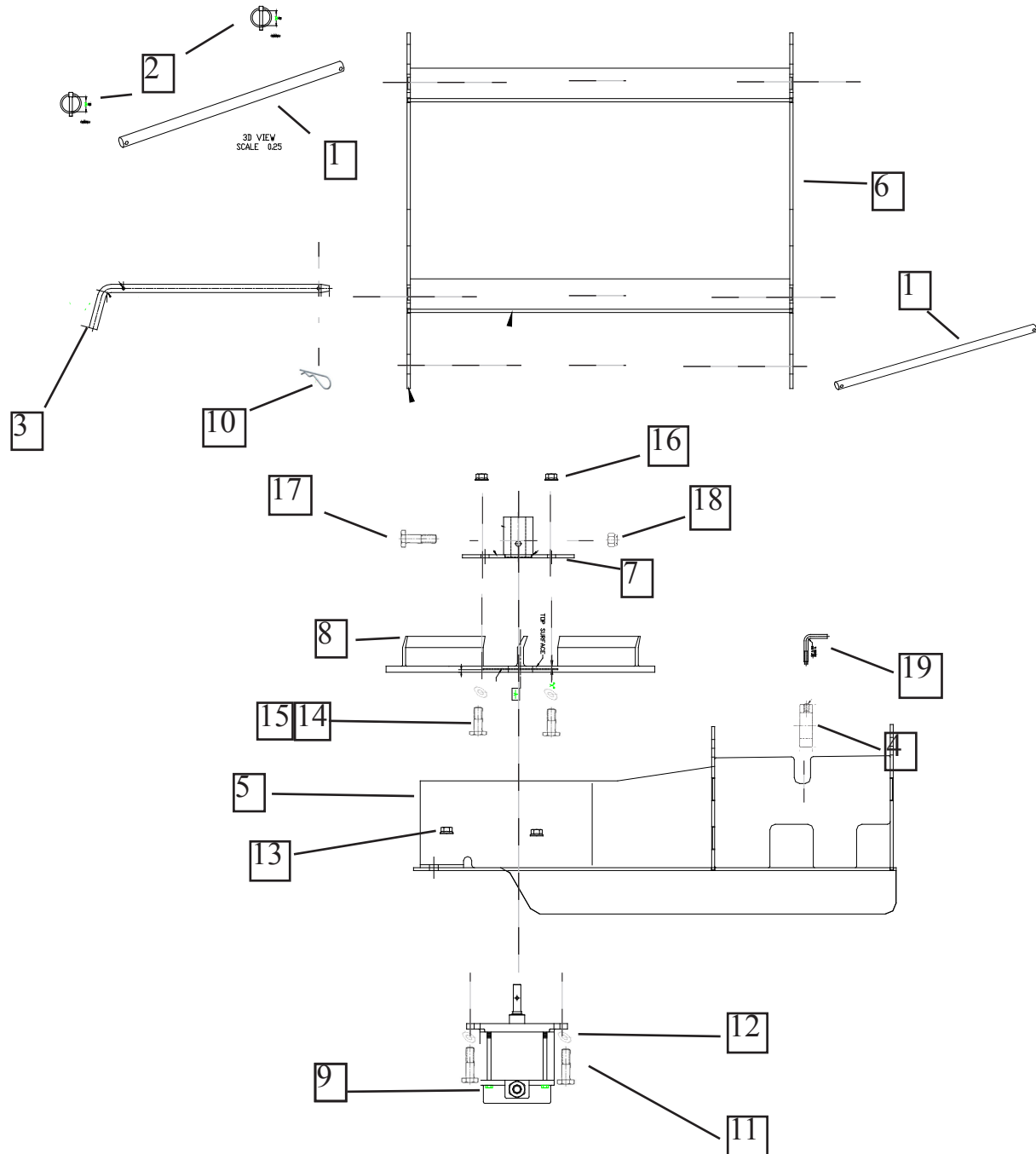
SEL INSTALLATION AND OPERATING INSTRUCTION MANUAL

Assembled Spinner Image Parts Listing

ITEM	PRODUCT	QTY	DESCRIPTION
1	00109-374-00	2	ROD, HINGE, S3
2	04014-201-01	4	PIN, LYNCH
NS	00119-538-02	1	ROD, CARRIAGE SUPPORT S3
4	04001-001-01	1	COLLAR, SET 1"
5	00106-314-00	1	LOCK, SPINNER, S3
6 CS	00122-251-01	1	WELD, SPINNER FRAME 10G CS
SS	00122-335-03	1	WELD, SPINNER FRAME 10G SS
7 CS	00122-291-01	1	WELD, SPINNER CARRIAGE, 10 G CS
SS	00122-291-03	1	WELD, SPINNER CARRIAGE, 10G SS
8	04622-079-00	1	DISC, POY 18" 1.62 BORE CCW
9 CS	00122-256-01	1	WELD, SPINNER HUB CS
10	04150-050-00	1	MOTOR, 12V 1650rpm 60A 1/2 HP
11	04003-187-03	1	BOLT, M6-1.0 X 40 mm HH SS
12	04003-818-01	1	LOCKNUT M6-1.0 TOP LOCK SS
13	04003-002-26	4	BOLT, 5/16 - 18 X 1 1/4" HH SS
14	04003-806-12	5	NUT, 5/16 SER FLANGE SS
NS	04003-003-26	4	BOLT, 3/8-16 X 1 1/4" HH SS
NS	04004-002-20	4	FLATWASHER, 3/8" U.S.S. SS
NS	04003-806-12	4	NUT, 3/8-16 SER FLANGE SS

SEL INSTALLATION AND OPERATING INSTRUCTION MANUAL

CARRIAGE MOUNTING EXPLODED VIEW



SEL INSTALLATION AND OPERATING INSTRUCTION MANUAL

FRONT MOUNTED SPINNER CARRIAGE

ASSEMBLY PARTS LIST

ITEM	PRODUCT	QTY	DESCRIPTION
1	00109-374-00	2	ROD, HINGE, S3
2	04014-201-01	4	PIN, LYNCH
3	00119-538-02	1	ROD, CARRIAGE SUPPORT S3
4	04001-001-01	1	COLLAR, SET 1"
5 CS	00122-251-01	1	WELD, SPINNER FRAME 10G CS
SS	00122-251-03	1	WELD, SPINNER FRAME 10G SS
6 CS	00122-291-01	1	WELD, SPINNER CARRIAGE, 10 G CS
SS	00122-291-03	1	WELD, SPINNER CARRIAGE, 10G SS
7	04622-079-00	1	DISC, POY 18" 1.62 BORE CCW
8 CS	00122-256-01	1	WELD, SPINNER HUB CS
9	04150-051-00	1	MOTOR, 12V 1/2 HP
10	04011-001-04	1	KEEPER, HAIRPIN LARGE, SS
11	04003-003-26	4	BOLT, 3/8-16 X 1 1/4" HH SS
12	04004-002-20	4	FLATWASHER, 3/8" U.S.S. SS
13	04003-806-12	4	NUT, 3/8-16 SER FLANGE SS
14	04003-002-26	4	BOLT 5/16-18 X 1/1/4" HH SS
15	04004-002-25	5	FLATWASHER 5/16 U.S.S. SS
16	04003-806-13	5	NUT 5/16-18 SER FLANGE SS
17	04003-187-03	1	BOLT, M6-1.0 X 40 mm HH SS
18	04003-818-01	1	LOCKNUT, M6-1.0 TOP LOCK SS
19	00106-314-00	1	LOCK, SPINNER, S3
NS	04003-002-21	1	BOLT 5/16-18 1 1/2" HH SS

SEL INSTALLATION AND OPERATING INSTRUCTION MANUAL

NAME PLATE INFORMATION

- When ordering parts or requesting information or assistance, always include the information listed below.
- The Model Number and Serial Number for the Spreader are shown on the name plate.
- The space below is provided as a convenient place to record these numbers; just fill in the blanks.

MODEL NUMBER _____

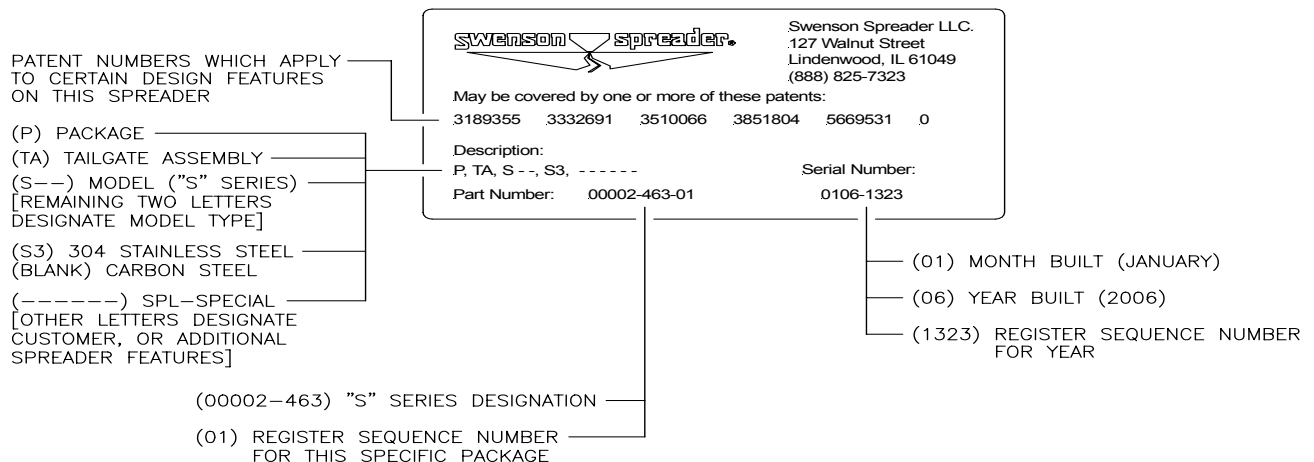
SERIAL NUMBER _____

DATE PURCHASED _____

DEALER PURCHASED FROM _____

**DEALER'S SERVICE
DEPARTMENT PHONE NUMBER** _____

EXPLANATION OF SERIAL NUMBER DECAL



S:\00111\00111-389-00RTJPD

CALL YOUR AUTHORIZED SWENSON SPREADER DEALER FOR PARTS AND SERVICE

SWENSON SPREADER (815) 393-4455

TOLL FREE (888) 825-7323

FAX (866) 310-0300

email: swensonsales@swensonspreader.com

SEL INSTALLATION AND OPERATING INSTRUCTION MANUAL



Dealers have the responsibility of calling to the attention of their customers the following warranty prior to acceptance of an order from that customer for any SWENSON® product.

WARRANTY

WHAT THIS WARRANTY COVERS

Swenson Spreader LLC (hereinafter "Swenson") is committed to assuring Customer satisfaction with the Spreader (hereinafter "Product"). Swenson warrants to the original owner (hereinafter "Purchaser") of the Product to be free from defects in material and workmanship for the following term: Swenson warrants ALL PARTS AND ASSEMBLIES to be free from defects in material and workmanship for a period of one year from the date of purchase. Installation of the Product must be in accordance with Swenson's instructions. This warranty extends to the Purchaser and may not be assigned without the prior written approval of Swenson; except a distributor may assign this warranty to the first titled owner of the Product.

If a Product has a defect in material or workmanship covered by the warranty, Swenson will (at our option) either replace or repair said part. Swenson's has sole discretion as to repair of defects covered by this warranty, or replacement of the Product. Swenson's responsibilities as described herein shall not exceed the amount of the purchase of the Product.

WHAT THIS WARRANTY DOES NOT COVER

Swenson's warranty does not extend to Product which have been misused, abused, improperly installed, repaired with non-genuine Swenson parts, improperly cared for, if materials such as lava rock or cinders are used, or for which payment has not been made. The warranty is void if repairs or alterations to the Product are made by unauthorized persons, or the Product serial numbers have been altered or defaced.

All gasoline engines and hydraulic pumps are warranted by their manufacturer and not by Swenson Spreader LLC. Electrical or hydraulic components are not to be disassembled without the express written permission of Swenson Spreader LLC.

THERE ARE NO WARRANTIES, EXPRESS OR IMPLIED, WHICH EXTEND BEYOND THE DESCRIPTION ON THE FACE HEREOF. THERE IS NO IMPLIED WARRANTY OF MERCHANTABILITY OR FITNESS FOR A PARTICULAR PURPOSE. SWENSON'S MAXIMUM OBLIGATION AND LIABILITY UNDER THIS WARRANTY SHALL BE LIMITED TO AN AMOUNT EQUAL TO THE PRESENT PURCHASE PRICE FOR THE SWENSON PRODUCT. SWENSON SHALL NOT BE LIABLE FOR ANY LOSS OR DAMAGE, WHETHER DIRECT OR INDIRECT, INCIDENTAL, CONSEQUENTIAL OR OTHERWISE ARISING OUT OF BREACH OF THIS WRITTEN WARRANTY OR ANY IMPLIED WARRANTY. Some states do not allow limitations on how long an implied warranty will last or the exclusion or limitation of incidental or consequential damages.

Defective parts returned to Swenson Spreader LLC must be accompanied by the following information:

RG A #	_____
Spreader Model	_____
Serial Number	_____
Date Installed	_____
Where Purchased	_____

Purchaser accepts these terms and warranty limitations unless product is returned within fifteen days for full refund of purchase price.

Effective 4/15/05

NOTES



SWENSON SPREADER LLC
P.O. BOX 127
LINDENWOOD, ILLINOIS 61049-0127

PHONE: (815)393-4455
TOLL FREE: (888)825-7323
SALES & SERVICE FAX: (866)310-0300

email: swensonsales@swensonspreader.com
website: www.swensonspreader.com

**IMPORTANT
INFORMATION
ENCLOSED**