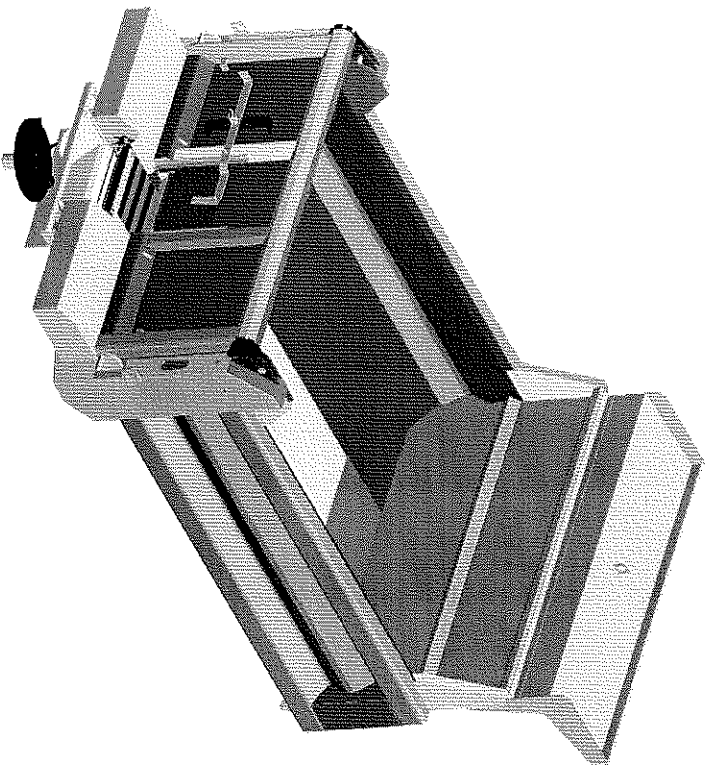


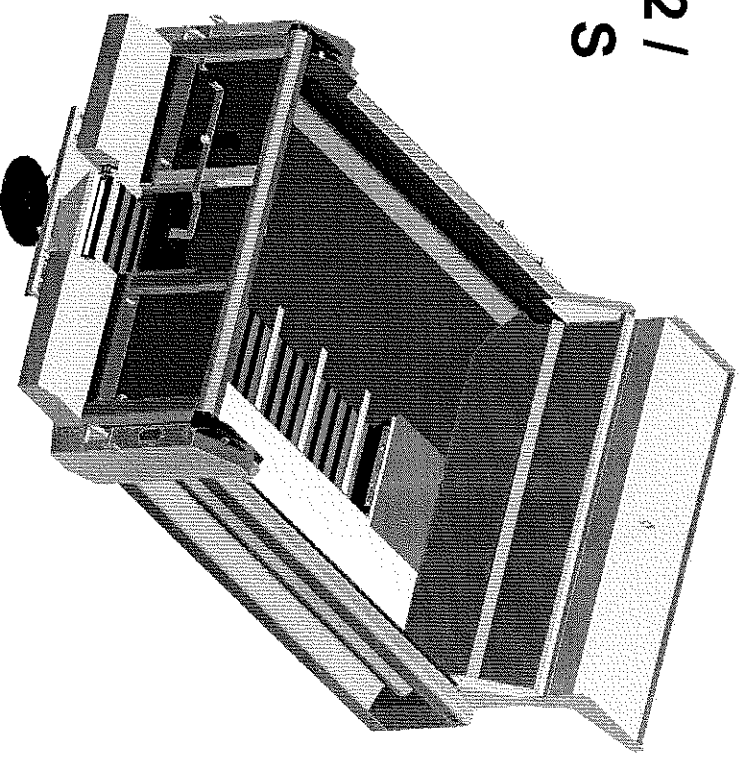
DO NOT THROW AWAY

INSTALLATION and OPERATING INSTRUCTIONAL MANUAL

READ BEFORE INSTALLATION



**APB 2 /
APB2 S**



SAFETY PRECAUTIONS	2
Hydraulic Specifications & Installation	6
Mounting Body, Hoist and Prop	9
Body Operating Instructions	12
Adjusting Rear Spinner	14
For Desired Spread Patterns	14

Manual No. 00117-515-01 Rev B
December 15, 2005

Swenson  **spreader®**

Recommended Regular Maintenance	16
Parts Drawings and Parts Lists	18
Decal Group	31
Name Plate Information	33
Warranty	Back Page

SAFETY PRECAUTIONS

THE BEST SAFETY DEVICE IS A CAREFUL OPERATOR!



This symbol means **ATTENTION!**
Become Alert!
Your safety is involved!
Please read and understand completely before operating!



Improper use of this equipment can result in serious injury. To reduce this possibility give complete and undivided attention to the job at hand, and follow these safety precautions.

PREPARATION:

Know your controls. Read this instruction manual. Learn how to stop the equipment quickly in an emergency.

Do not allow children to operate machine; nor adults to operate it without proper instructions.

Keep all individuals not involved in the use of the equipment a safe distance away.

OPERATION:

Observe settings on all equipment controls, and shut off all equipment before starting engine so equipment will not intentionally operate when engine is started.

Always check area around machine before engaging or operating controls.

Always wear relatively tight and belted clothing when operating equipment. Loose jackets, shirts, sleeves or other loose clothing should not be worn because of the danger of catching them in moving parts or controls.

Stop and inspect equipment if unusual movement, sounds or noises are observed. Repair damage before restarting and operating the equipment.

Disengage power to all operating equipment: (1) before leaving operator's position, (2) before making any repairs, adjustment, or cleaning, or (3) when not in use.

Take all possible precautions when leaving the equipment unattended; such as disengaging the hydraulic system from the vehicle engine, shifting vehicle out of gear, setting parking brake, shutting off engine and removing key.

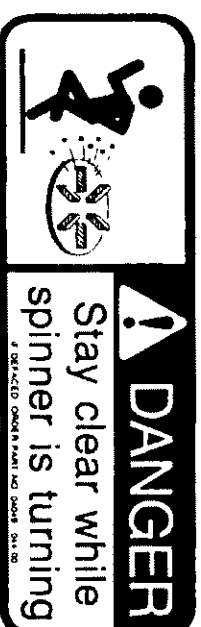
NOTICE:

1. **It is the responsibility of the dump body installer to apply all safety decals to the body in a secure manner in locations shown on pages 4 and 5 of this instruction manual.**

2. **It is the responsibility of the owner of the dump body to replace any or all safety decals which become unreadable or otherwise defaced.**

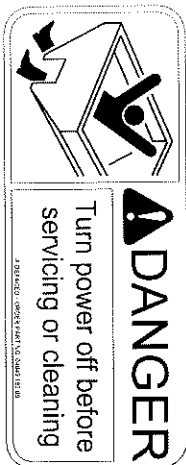
Read and observe all "DANGER" and "CAUTION" safety decals appearing on equipment.

The following safety decals appear in various locations on your equipment. The sizes of the decals shown in this manual have been reduced in order to save space. Refer to pages 4 & 5 for the location of safety decals on your equipment.



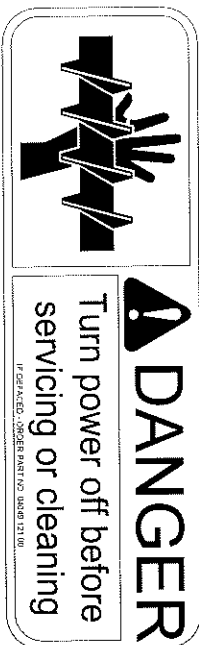
This decal appears on or near the spinner assembly on the left side of the truck chassis and ahead of the rear tires, and/or appears on or near the spinner assembly at the rear of the truck.

It alerts all to the danger of being struck by material being spread by the spinner assembly which could result in serious personal injury.



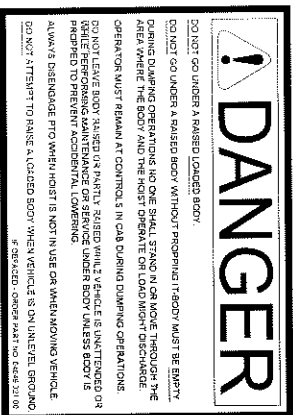
This decal appears near the top rails of the body and near the top edge of the tailgate where unsafe access can be gained to the conveyor which operates within the floor of the body.

It alerts all to the danger of being trapped inside the body and being caught in the conveyor where serious personal injury could result.



This decal appears on or near the crossauger assembly mounted up under the front of the body, where unsafe access can be gained to a rotating auger operating inside the crossauger trough.

It alerts all to the danger of getting caught in the dropout opening of the crossauger where serious personal injury could result.

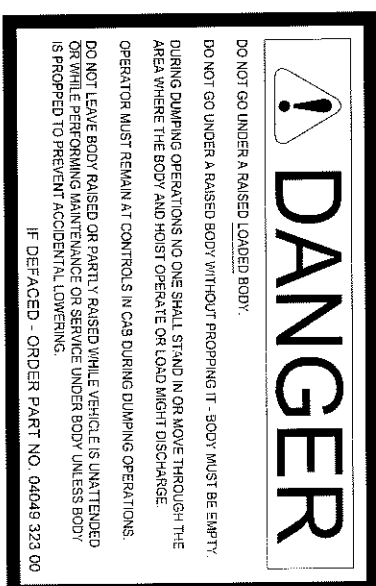


This decal appears on the left rear side, and the right rear side of the dump body.

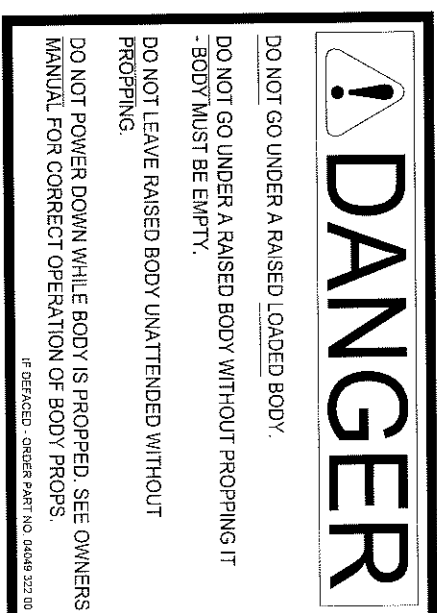
It alerts all to the danger of being under a raised dump body where serious personal injury could result if the body were to come down.

It also alerts the operator to precautions necessary to eliminate other dangerous situations associated with a raised body.

This decal appears on the left front side, and the right front side of the dump body.




This decal appears on the left and right sides of the truck frame.



These decals alert all to the danger of getting under a raised dump body where serious personal injury could result if the body were to come down.

They also alert the operator to precautions necessary to eliminate other dangerous situations associated with a raised body.

LOCATION OF SAFETY DECALS




CAUTION

1. KEEP ALL SHIELDS IN PLACE.
2. MAKE CERTAIN EVERYONE IS CLEAR BEFORE STARTING MACHINE OR MOVING VEHICLE.
3. KEEP HANDS, FEET AND CLOTHING AWAY FROM ALL POWER DRIVEN PARTS.
4. DISENGAGE PTO, SHUT OFF HYDRAULIC VALVE, AND SET PARKING BRAKE BEFORE LEAVING OPERATORS POSITION. MAKE SURE ALL MOVEMENT HAS STOPPED BEFORE SERVICING OR UNLOADING MACHINE.
5. USE FLASHING LIGHTS WHEN OPERATING MACHINE.
6. MAKE SURE MACHINE IS SOLIDLY SUPPORTED WHEN IT IS BEING MOUNTED, DISMOUNTED, OR STORED.

IF DEFACED - ORDER PART NO. 04449 045 00

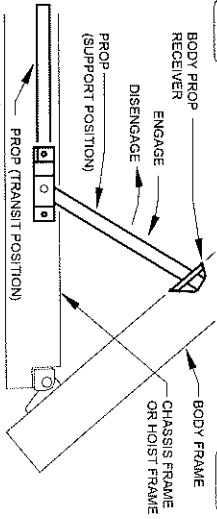
This decal appears on the left front side of the dump body.

It cautions all to observe general safety procedures when operating this equipment.



OPERATION OF BODY PROP

BODY MUST BE UNLOADED BEFORE USING PROPS



Labels in diagram: BODY PROP, BODY PROP RECEIVER, ENGAGE, DISENGAGE, PROP (SUPPORT POSITION), PROP (TRANSIT POSITION), BODY FRAME, CHASSIS FRAME OR HOIST FRAME.

TO USE THE PROPS:

1. RAISE BODY TO HEIGHT WHERE PROPS CAN BE SWUNG UPWARD INTO POSITION. PLACE THE HOIST CONTROL VALVE IN THE NEUTRAL (HOLD) POSITION.
2. SWING PROPS UP INTO SUPPORT POSITION.
3. LOWER BODY SLOWLY UNTIL PROPS REST ON BODY PROP RECEIVER. DO NOT POWER HOIST DOWN. PLACE THE HOIST CONTROL VALVE IN THE NEUTRAL (HOLD) POSITION.

TO STORE PROPS:

4. RAISE BODY TO A HEIGHT WHERE THE PROPS WILL CLEAR THE PROP RECEIVER. BE SURE THE HOIST CONTROL VALVE IS IN THE NEUTRAL (HOLD) POSITION.
5. SWING PROPS DOWN TO TRANSIT POSITION. BEFORE LOWERING BODY, BE CERTAIN THAT THE AREA IS CLEAR.

NOTE: BODIES OVER 17 ARE EQUIPPED WITH TWO PROPS

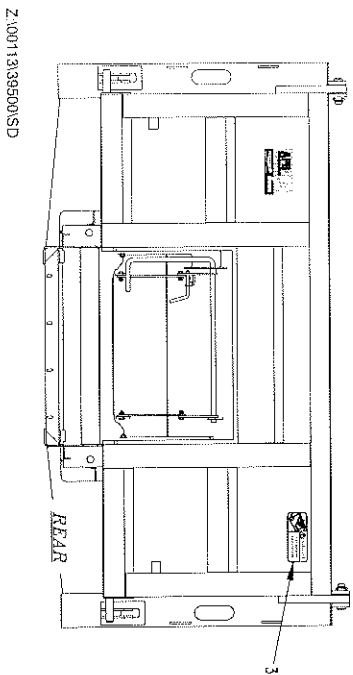
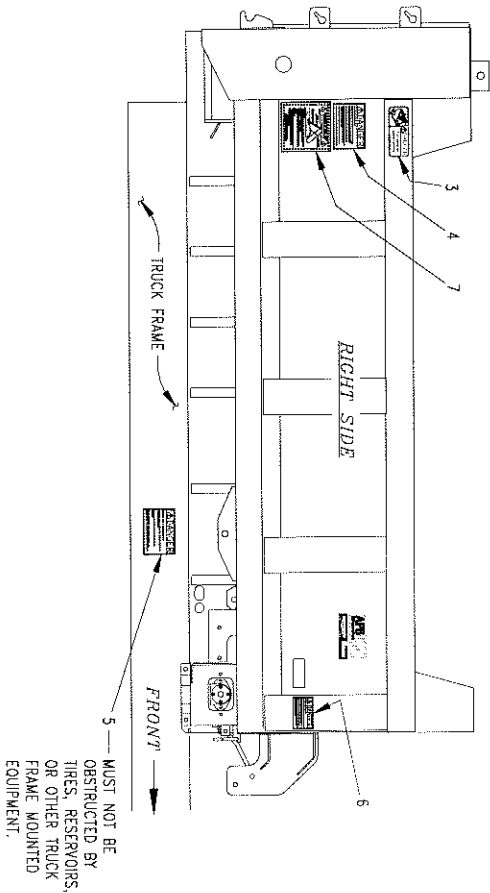
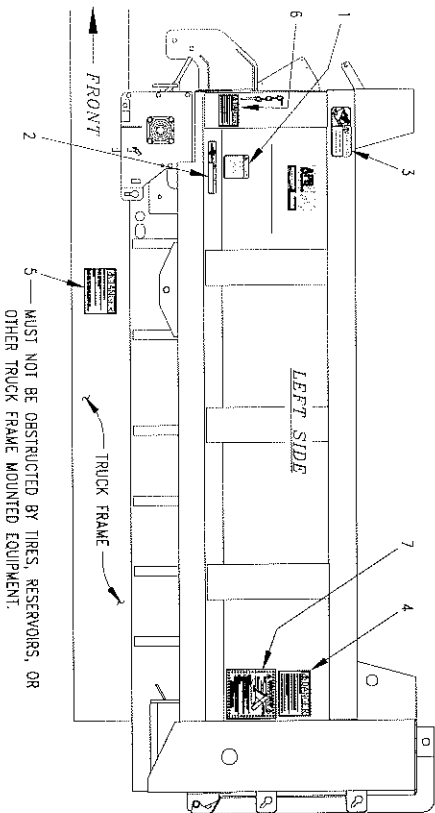
WHEN TWO PROPS ARE SUPPLIED, BOTH MUST BE USED

IF DEFACED - ORDER PART NO. 04049 324 00

This decal appears on the left side, and the right side of the dump body.

It instructs the equipment operator on the safe use of the dump body.

LOCATION OF SAFETY DECALS (Continued)



Decal	Part Number	Qty.	Description
1	04049-045-00	1	General Caution Decal (4 1/4" x 4" yellow and black)
2	04049-121-00	1	Auger Danger Decal (9" x 2 3/4" red and white)
3	04049-182-00	3	Conveyor Danger Decal (8 1/2" x 3 3/8" red and white)
4	04049-321-00	2	Body General Danger Decal (7 3/4" x 5 1/2" red and white)
5	04049-322-00	2	Truck Frame Danger Decal (7 3/4" x 5 1/2" red and white)
6	04049-323-00	2	Body General Danger Decal (5 3/8" x 3 1/2" red and white)
7	04049-324-00	2	Prop Operation Decal (8 1/2" x 8 1/2" yellow and black)
*	00117-516-01	1	Kit, (Contains All Decals)

Z:0011339500SD

HYDRAULIC SPECIFICATIONS AND INSTALLATION

Hydraulic Oil -----	Good grade of MS10W hydraulic oil which has wear, oxidation, and foam inhibitors.
Oil Filter -----	10 micron element return line filter
Relief Valve Setting -----	1500 PSI
Minimum Oil Flow Requirement to -----	22 GPM
Dual Flow Control Valve	
Maximum Oil Flow Capability to Spinner -----	7 GPM
Maximum Oil Flow Capability to Conveyor System -	15 GPM
Maximum Working Pressure of Hoist Cylinder -----	2000 PSI

MOTOR DISPLACEMENTS		
MOTOR FOR:	Displacement Per Revolution (Cubic Inches)	Motor Shaft Revolutions Per Minute at 1 Gallon Of Oil Per Minute (Theoretical)
Spinner	2.8	82.5
FLOOR CONVEYOR*		
(Single Motor)	22	10.0
(Dual Motor)	2 (14)	

* Motors are connected in parallel on units with dual motor drive floor conveyors. As a result, conveyor shaft RPM is less than that of units with single motor floor conveyor drives.

1. **Dual flow control valve:** The spinner and conveyor output oil flows are being controlled by a valve which is a dual flow regulator, and pressure compensated so conveyor and spinner speeds remain constant regardless of increases or

decreases in pump output and/or operating pressures. This holds true as long as flow into valve is equal to (or exceeds) valve output flow requirements.

2. **Motor movement during operation:** The floor conveyor drive motor is torque arm mounted. As the motor operates some movement may be observed; this is acceptable.

3. The conveyor hydraulic circuit is connected in series. Whenever floor conveyor is operated in forward direction, crossauger conveyor operates automatically. This applies only to front drive units.

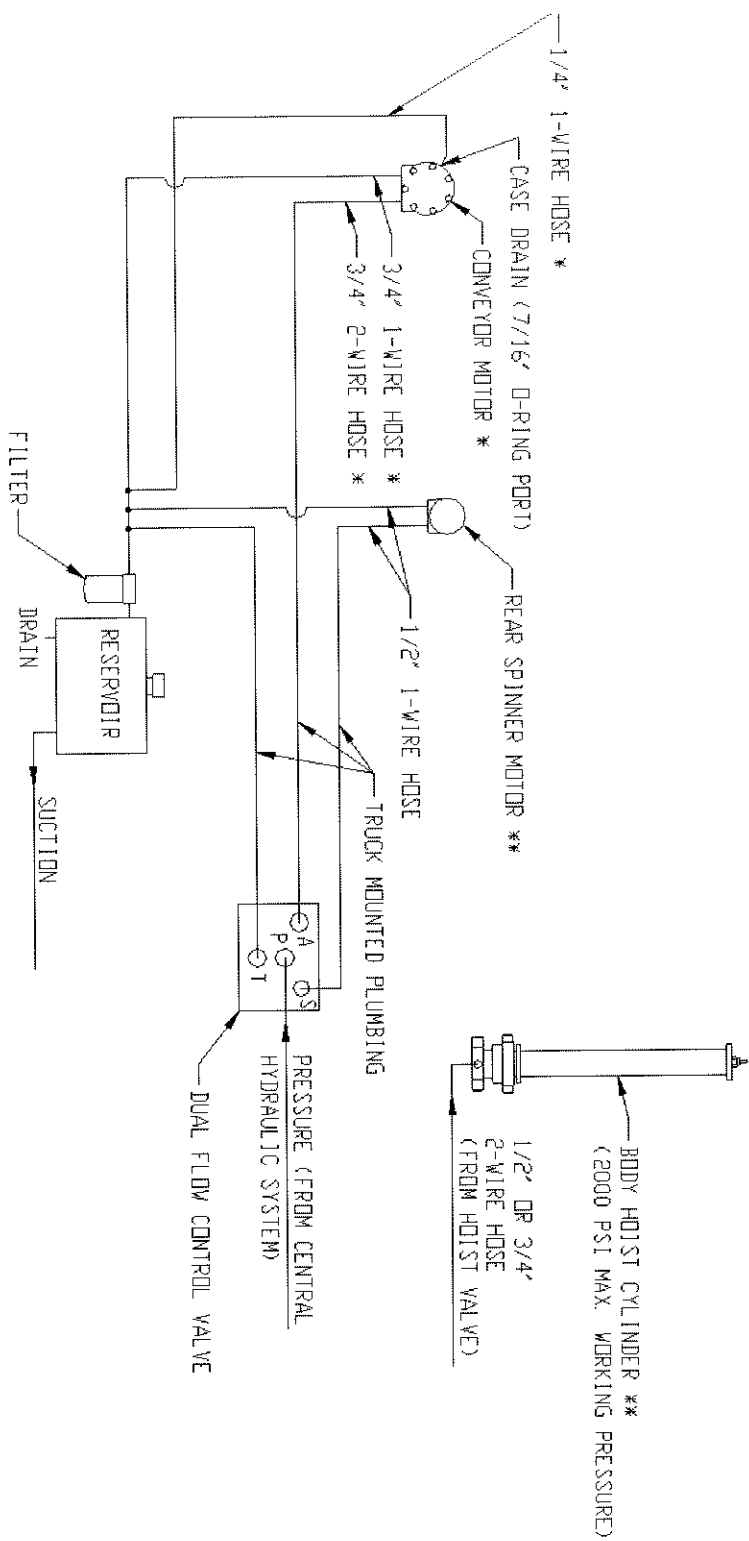
4. **Diverting spinner oil flow to crossauger drive motor for berming operations:** This is necessary if unit is to be used where maximum output of the crossauger is desired. The operating characteristics of the dual flow control valve enable spinner oil flow to be combined with conveyor motor oil flow to increase crossauger motor speed. Since conveyor motor(s) is (are) connected in series with crossauger motor, this is possible.

In single conveyor motor circuits, spinner oil flow is combined with output oil flow from conveyor motor but just ahead of input port on crossauger motor. Combining these two flows as such increases only crossauger motor speed, thus increasing capability of crossauger to convey larger volumes of material received from the conveyor.

In dual motor conveyor drive circuits, spinner oil flow is combined with input oil flow to conveyor motors. Combining spinner oil with input oil parallel connected conveyor motors will increase speed of conveyor motors, as well as crossauger motor. It is desirable that conveyor motor speeds increase since same volume of oil that operates single conveyor motors also operates parallel connected dual conveyor motors.

5. The hydraulic plumbing diagrams on the following pages may be used to install an entire system, or part of a system depending upon individual requirements.

6. Alternate proven methods and components are acceptable to suit various truck model requirements.

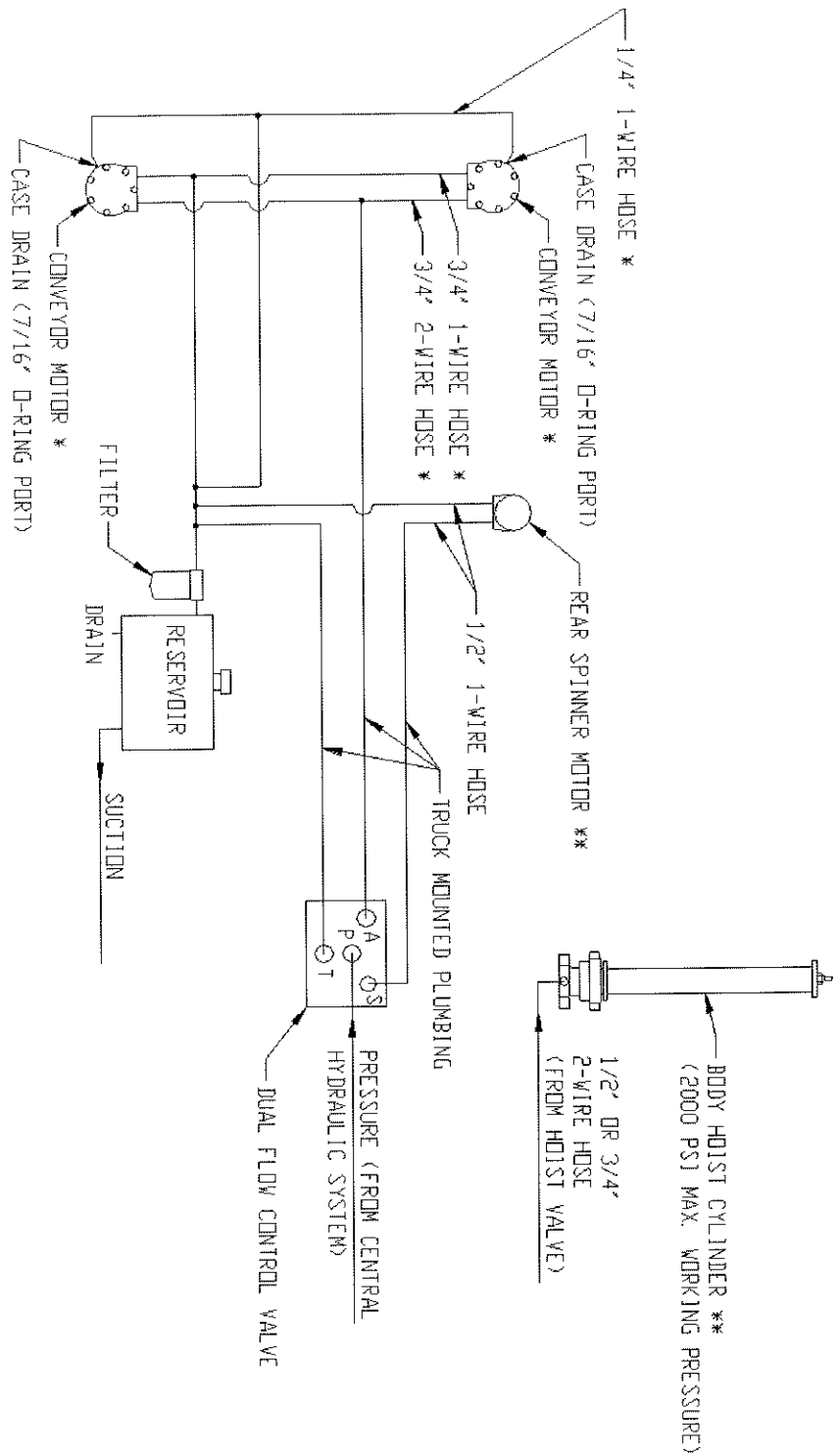


NOTES:

1. SPINNER SHOULD OPERATE IN COUNTER-CLOCKWISE DIRECTION AS VIEWED FROM TOP OF SPINNER
2. IF A MOTOR OPERATES IN THE WRONG DIRECTION, REVERSE HOSE CONNECTIONS AT MOTOR PORTS (USUALLY EASIER)

- * - APB BODY MOUNTED COMPONENTS
- ** - COMPONENTS FURNISHED WITH APB OPTIONS
- - UNLABELED COMPONENTS FURNISHED BY INSTALLER

REAR DRIVE
SINGLE MOTOR PLUMBING DIAGRAM
(for bodies 11 ft. and under)



NOTES:

1. SPINNER SHOULD OPERATE IN COUNTER-CLOCKWISE DIRECTION AS VIEWED FROM TOP OF SPINNER
2. IF A MOTOR OPERATES IN THE WRONG DIRECTION, REVERSE HOSE CONNECTIONS AT MOTOR PORTS (USUALLY EASIER)

- * - APB BODY MOUNTED COMPONENTS
- ** - COMPONENTS FURNISHED WITH APB OPTIONS
- - UNLABELED COMPONENTS FURNISHED BY INSTALLER

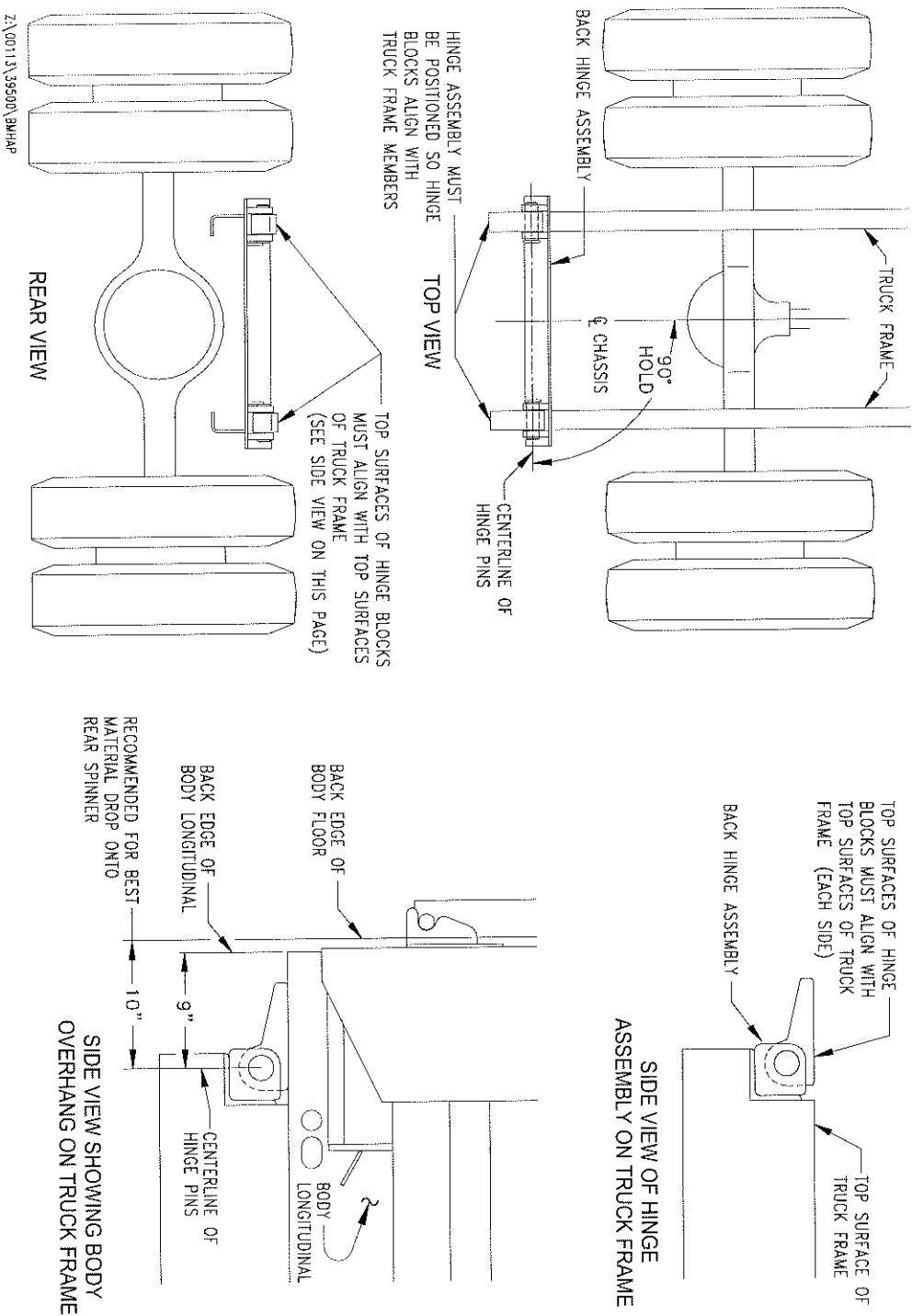
REAR DRIVE DUAL MOTOR PLUMBING DIAGRAM (for bodies 12 ft. and over)

DANGER!

MOUNTING BODY, HOIST AND PROP

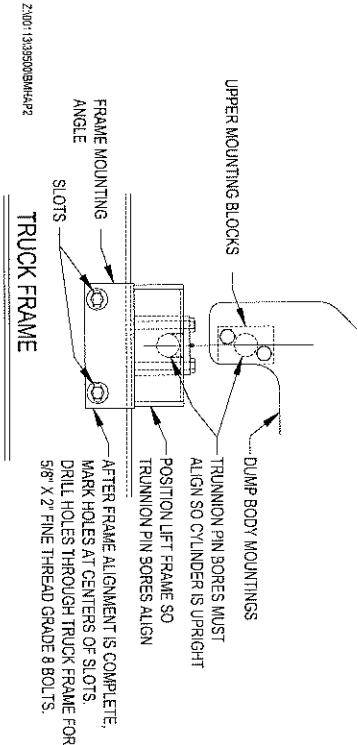
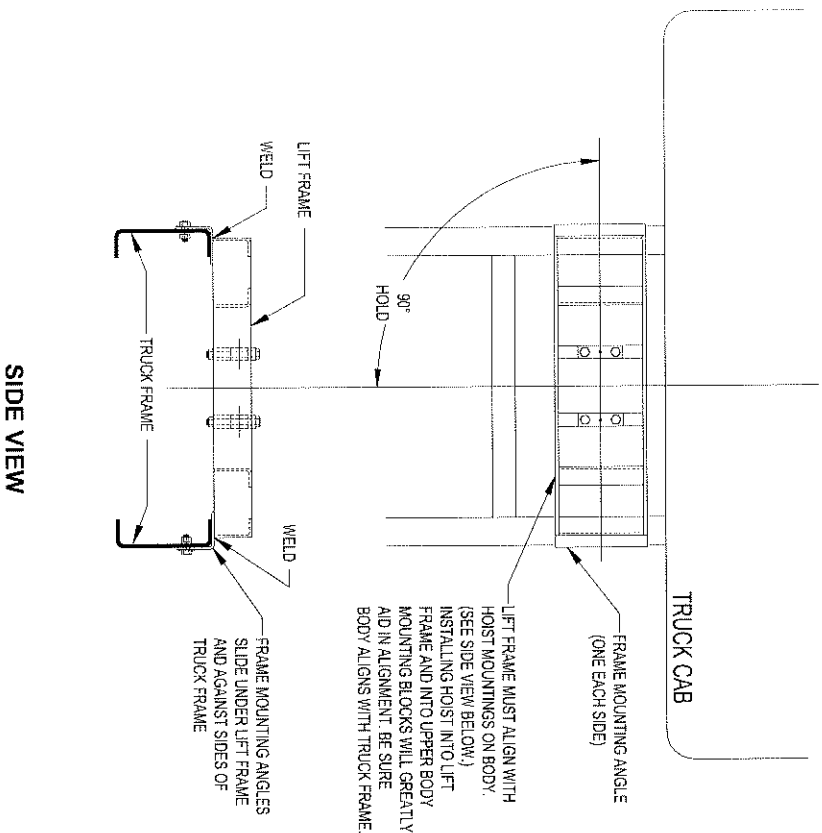
Observe all safety precautions during all installation procedures. Never be under or allow anyone else to be under a raised body without proper support.
INSTALLING BACK HINGE ON TRUCK FRAME

In order for body to raise and lower properly without placing undo stress on truck frame and body frame, it is necessary to pay particular attention to alignment and squareness of rear hinge on truck frame.



INSTALLING HOIST LIFT FRAME ON TRUCK FRAME

IT IS RECOMMENDED THAT REAR HINGE AND BODY BE INSTALLED FIRST IN ORDER FOR HOIST LIFT FRAME TO BE LOCATED IN BEST ALIGNMENT WITH HOIST MOUNTING ON FRONT OF BODY. SEE "SIDE VIEW" ILLUSTRATIONS BELOW.



Note: If after all installation is complete, cylinder is not quite upright, lift frame may be adjusted by loosening bolts and sliding horizontally utilizing slots in frame mounting angles. Retighten bolts.

INSTALLING AND OPERATING HOIST CYLINDER

(for cylinder maintenance see pages 16 AND 17.)

When installing cylinder, be sure cylinder is standing upright when fully retracted. Maximum initial force to raise body is achieved in this position. Some movement at the top of the cylinder can be expected and is acceptable. Raise body slowly and check to be sure outer protective cover does not contact base tube or outer tubes while extending.

Body guide bars are included in the hoist and body mounting parts package. Circumstances (such as longer bodies) on your installation may require the use of guide bars, however, under normal conditions guide bars are not recommended. Closely fitting guide bars prevent small amounts of side-to-side hoist cylinder movement. This in turn forces the outer protective cover against the base tube thus scratching it when cylinder extends.

To prevent severe shock at end of cylinder stroke, a stroke limiter is recommended. The most popular type of stroke limiter is the cutoff cable (or disengagement cable) connected to the pump. However, your pump operates other accessories besides the hoist, so it is recommended that the cable be connected to the hoist valve.

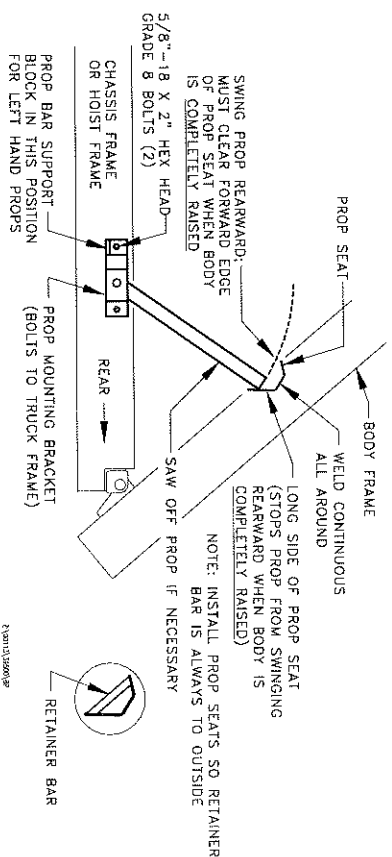
For storage and shipping purposes, cylinders are lightly coated with oil as a moisture barrier. During first several strokes of cylinder this oil may be seen dripping from cylinder parts, but will cease as cylinder is used.

INSTALLING BODY PROP

! DANGER!

TO AVOID SERIOUS INJURY, DURING ALL PROP INSTALLATION PROCEDURES WHEN BODY IS RAISED BODY MUST BE SECURELY BLOCKED AT ALL TIMES SO IT CANNOT COME DOWN. SUPPORT BLOCKS MUST NOT BE MOVED UNTIL THERE IS NO DANGER OF ANYONE BEING UNDER BODY WHEN BODY IS LOWERED.

After Prop installation is complete, raise and lower body slowly to make sure prop functions properly as noted in illustration.



LEFT HAND PROP INSTALLATION IS SHOWN, FOR RIGHT HAND INSTALLATION, USE RIGHT HAND PROP PARTS (IF FURNISHED). ABOVE INSTRUCTIONS STILL APPLY, BUT ARE OPPOSITE HAND.

BODY OPERATING INSTRUCTIONS

HYDRAULIC OPERATING INSTRUCTIONS



1. When starting up new equipment, be sure everyone is standing clear; watch for anything that may require shutting system down.
2. Be sure lever on valve is moved completely to "OFF" position before working in or around spreading equipment.
4. The feed gate at the rear of the body will also allow more material to feed to the rear mounted spinner when opened wider. Refer to pages 14 & 15 for spinner adjustment.
5. The control valve may be turned on and off, or adjusted while truck is in motion.
6. Spinner and conveyor may be stopped at the same time without changing their valve settings by moving the on-off lever to "OFF" position.

INITIAL START UP

1. Fill reservoir about three-fourths full with high grade non-foaming hydraulic oil. **KEEP OIL CLEAN!**
2. Move valve on-off lever to "OFF" position.
3. Open conveyor and spinner knobs on valve.
4. Engage PTO and allow hydraulic oil to circulate several minutes to warm up.
5. Move valve on-off lever to "ON" position.
6. Check entire hydraulic system for leaks.
7. Examine conveyor and spinner to see if they are turning in proper direction.
Note: If your unit is equipped with a valve for reversing the conveyor direction, it will be necessary to note the direction of conveyor travel when the reversing valve handle is moved to either of the operational positions.
8. Open and close conveyor and spinner speed control knobs at various settings and check to see that conveyor and spinner speeds increase and decrease corresponding with knob settings.
9. Refill reservoir to three-fourth full.
10. Hydraulic system is ready for use.

SPREADER OPERATION

1. Start truck engine and allow hydraulic system to warm up by shutting off spinner and conveyor knobs and moving on-off lever to "ON" position.
2. Turning the spinner knob counter clockwise will increase the spinner speed and width of spread.
3. Turning the conveyor knob counter clockwise will increase the conveyor speed and thus the amount of material spread.

HAULING, DUMPING AND CONVEYING

GENERAL HAULING:

Your all purpose dump body may be used for hauling nearly all materials that are commonly hauled in ordinary dump bodies. Since your unit is equipped with a conveying system which has been built into the floor, care must be exercised to avoid damage to its parts. A conveyor cover is available for protecting the conveyor while body is used for general hauling.

Handle on left front corner of body is used to latch and unlatch tailgate for high volume dumping. Use spreader chains for adjusting tailgate opening.

For high volume dumping without raising body, tailgate may be unlatched and conveyor operated rearward. Bulk of material will be unloaded, then remaining material can be discharged by raising body.

Dumping rock larger than 2" directly onto **unprotected** conveyor flite bars or conveyor belt and seal strips is not recommended. Bending of bars or gouging of belt and seal strips will result.

Notice: Visible dents on body and conveyor floors, bent conveyor flite bars, and gouged conveyor belting and seal strips indicate that materials larger than those recommended have been dropped into the body, and thus will void all warranties.

HAULING MATERIALS FOR ICE AND SNOW CONTROL OPERATIONS:

Your all purpose dump body may be used for hauling all materials that are commonly used for spreading on road surfaces for ice and snow control operations. These will include salt and various abrasives, and mixtures consisting of various materials.

Materials should be relatively free flowing, and be free of anything larger than 3/4" chunks which will not crumble or otherwise be broken up while being conveyed. Larger materials will lodge in opening of low feedgate settings and disrupt set spread rates. Larger materials may also jam and stop front crossauger operation and/or damage crossauger conveyor parts.

Note: If not furnished with unit, a kit is available for installation which allows user to operate conveyor from rear of truck without going back to cab each time.

ADJUSTING REAR SPINNERS FOR DESIRED SPREAD PATTERNS

! DANGER!

Serious personal injury can result from being caught in a turning spinner. Stay clear and keep all others clear when spinner is turning.

Serious personal injury can result if hit by flying particles being thrown by a turning spinner.

Stand back, and keep all others back at least 50 feet while spinner is turning. **DO NOT ASSUME** that particles cannot be thrown by a turning spinner just because material is not being dropped onto the spinner; particles that have been sticking to the spinner may suddenly come loose and be thrown causing possible injury.

In general, for the most commonly desired spread patterns, the material drop zone should be **over forward half** and **within outside edge of disk**. See pages 14 & 15. Adjusting the specific location where material falls on the forward half of the spinner disc is very important. This allows the greatest portion of the material to be placed on the road surface in the three most commonly desired locations:

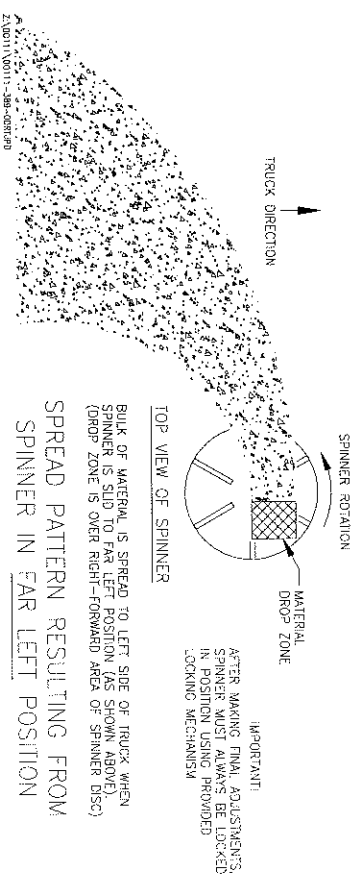
1. To the left of the vehicle.
2. To the left rear of the vehicle.
3. To the rear of the vehicle.

The primary spinner shield which is positioned approximately at the right forward quadrant of the spinner disc, is intended to restrict "stray" material to the spinner area and to aid in a more defined spread pattern.

Once the desired spread pattern has been obtained, increasing the spinner speed by opening the spinner control knob will give a wider spread pattern and closing the spinner control knob will give a narrower spread pattern.

Also raising the spinner assembly higher above the road surface will give a wider spread pattern, and lowering the spinner assembly closer to the road surface will give a narrower spread pattern.

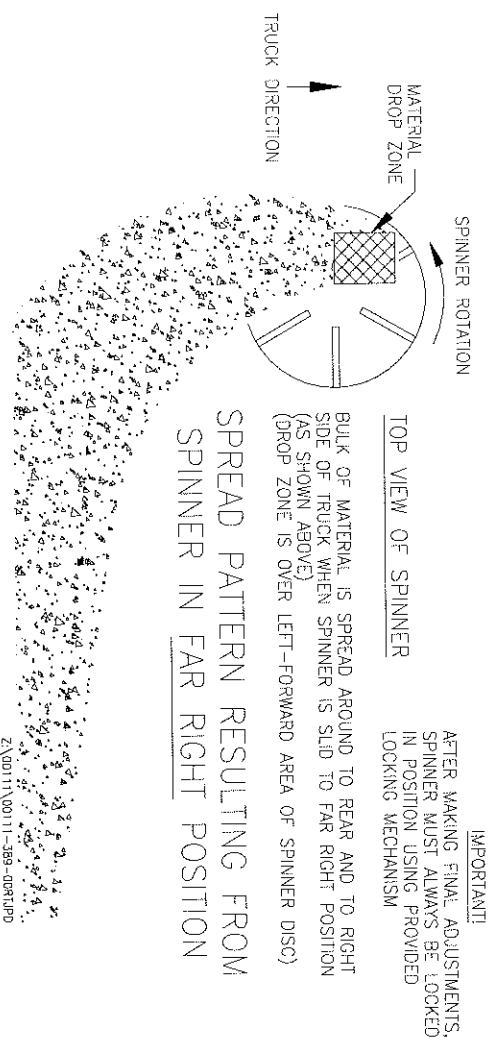
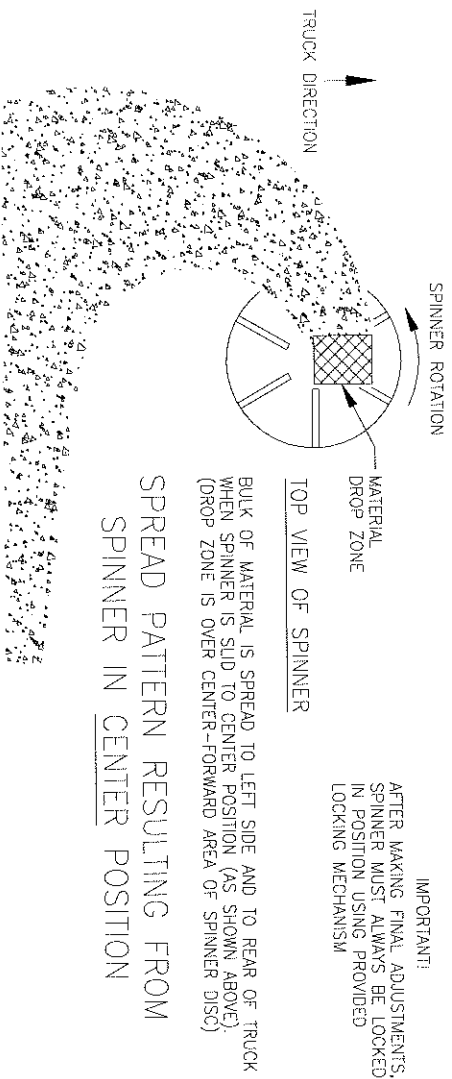
Note: Allowing material to drop on a random more centered location on the spinner disc is not recommended. In so doing the material has no specific direction in which it can exit the spinner flites. As a result, material is distributed 360° around the spinner disc causing material to be spread in undesirable locations such as on rear truck chassis parts and in roadside ditches.



Bulk of material is spread to left side of truck when spinner is moved to outside hole (as shown) where material drop zone is over **right forward** area of spinner disc. (See following page for obtaining spread pattern to rear of truck.)

Spinner assembly can be adjusted to intermediate hole positions for spread patterns which are a combination of the extremes shown on this page and on the following page.

ADJUSTING REAR SPINNER FOR DESIRED SPREAD PATTERN (Continued)



Z:\00111\00111-389-00R1UPD

RECOMMENDED REGULAR MAINTENANCE



BEFORE PERFORMING MAINTENANCE OPERATIONS--PARK VEHICLE ON LEVEL GROUND, SET PARKING BRAKE, SHUT OFF ALL POWER, AND MAKE SURE ALL MOVEMENT HAS STOPPED.

(If body is raised, it must be securely blocked so it cannot come down. Support blocks must not be removed until there is no danger of anyone being under body when body is lowered.

1. PERIODIC LUBRICATION IS REQUIRED FOR PROPER OPERATION.

The following are components that require regular and/or seasonal inspection and lubrication . Refer to lubrication schedule chart for frequency.

For all points of lubrication, use good standard practice of wiping clean the engine area of lubricant entry before adding lubricant.

- a. Two rear and two front conveyor bearings, and one crossauger bearing (if furnished) require lubrication. (Caution should be observed to avoid overgreasing as damage may result to seals.)
- b. A grease fitting is provided on the latch handle pivot at left front corner of the body. Regular lubrication is required due to the loading and movement in this assembly.
- c. An oil hole is provided near the top of the feedgate jack. Use the heaviest weight oil possible that can be squirted out of an oil can. When oiling, push tip of oil can straight into hole as far as possible and squirt sharply so oil will be applied to screw. There is no danger of over oiling.
- d. A grease fitting is provided in each hinge block in rear body hinge assembly. Regular lubrication is required due to the loading and movement at these pivot points.
- e. A grease fitting is provided in each of the upper hoist cylinder mounting blocks and in each of the lower cylinder mounting blocks. Regular lubrication is required due to the loading and movement at these pivot points.

- f. A coating of grease on all adjusting and sliding parts is recommended for easier adjustment.

EXAMPLES:

- Drag chain take-up bolts
- Drag chain take-up slides
- Front feedgate slides
- Rear feedgate adjusting parts

- g. Greasing universal joints in hydraulic pump drive line is recommended with each truck lubricating.

- h. If unit is going to be out of use for several days, oiling conveyor drag chain is recommended.

Body Lubrication Schedule Chart

FRONT AND REAR ----- EVERY 15 HRS.
CONVEYOR BEARINGS (GREASE)

BEARING (GREASE)

TAILGATE LATCH HANDLE ----- WEEKLY
PIVOT (GREASE)

BODY REAR HINGE (GREASE) ----- EVERY 3 MONTHS
CYLINDER TRUNNION PINS (GREASE) ----- EVERY 3 MONTHS
(UPPER AND LOWER)

2. CHECK HYDRAULIC OIL LEVEL IN RESERVOIR.

It should be visible in sight level gauge mounted on side of reservoir. A reservoir requiring periodic refilling indicates a leak exists. Maintaining a full reservoir aids in cooler hydraulic operation. See page 6 for hydraulic oil type.

3. CHECK FOR OIL LEAKS.

Checking at all hose fitting connections, and then tighten if necessary.

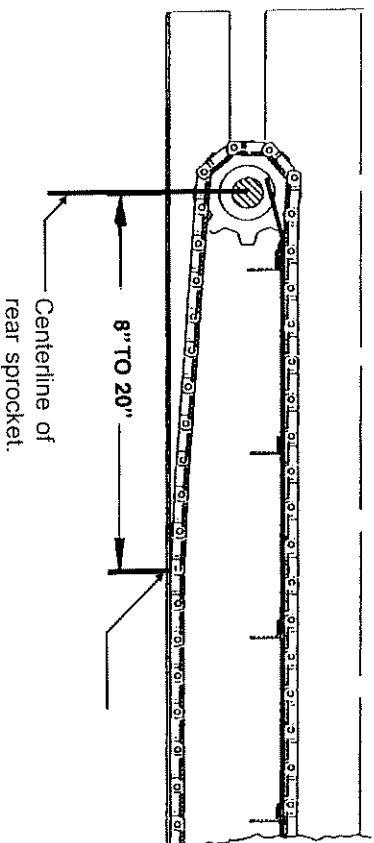
4. HYDRAULIC OIL FILTER CARTRIDGE.

Cartridge should be replaced if gauge pointer is in red zone when hydraulic system is operating.

RECOMMENDED REGULAR MAINTENANCE

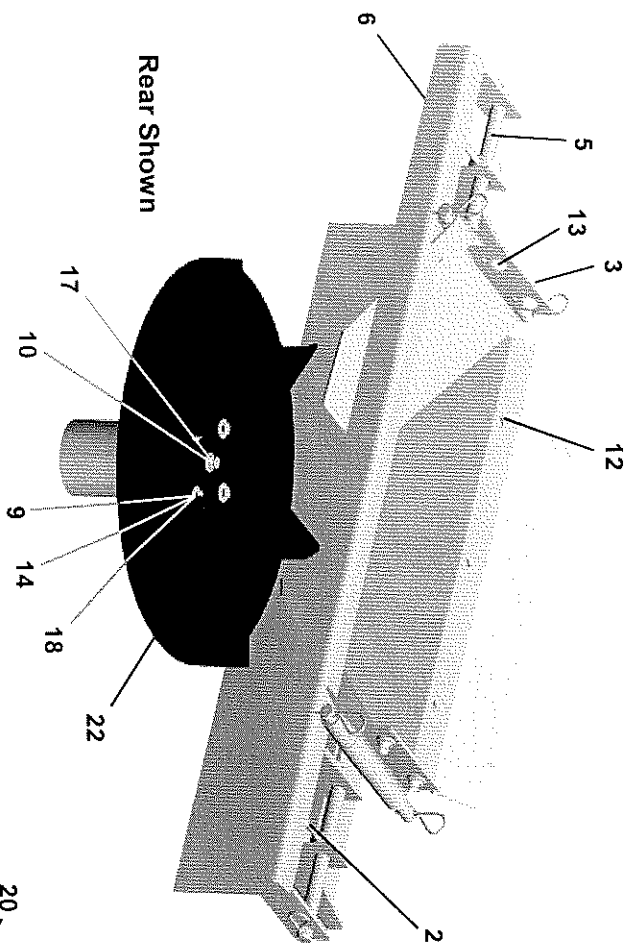
(Continued)

5. **CLEAN QUICK DISCONNECTS** before taking apart or connecting.
6. **PROTECT QUICK DISCONNECTS AFTER TAKING APART** with well fitting caps and plugs, oily rag, or other suitable protection.
7. **CONVEYOR DRAG CHAIN SLACK** should be taken up after initial startup, then checked periodically and taken up so distance between centerline of rear sprocket and point where chain contacts skid bar is 18 to 20 inches. (See illustration below.)
9. **SALT AND OTHER ICE MELLTING CHEMICALS** are highly water-soluble materials and can be removed easily with plain water. Periodically hose off entire unit paying close attention to adjusting mechanisms and moving parts.
10. **DURING FREEZING WEATHER** body should be kept empty to prevent material from freezing on drag chain.
11. **IF HOIST CYLINDER BEGINS TO CLOSE SLOWLY WHILE IN USE** due to combination dust-oil buildup on cylinder surfaces, hydraulic oil may be used to cleanse surfaces of each stage. Then apply a heavy coat of clean hydraulic oil, raise and lower cylinder two or three times and wipe off excess

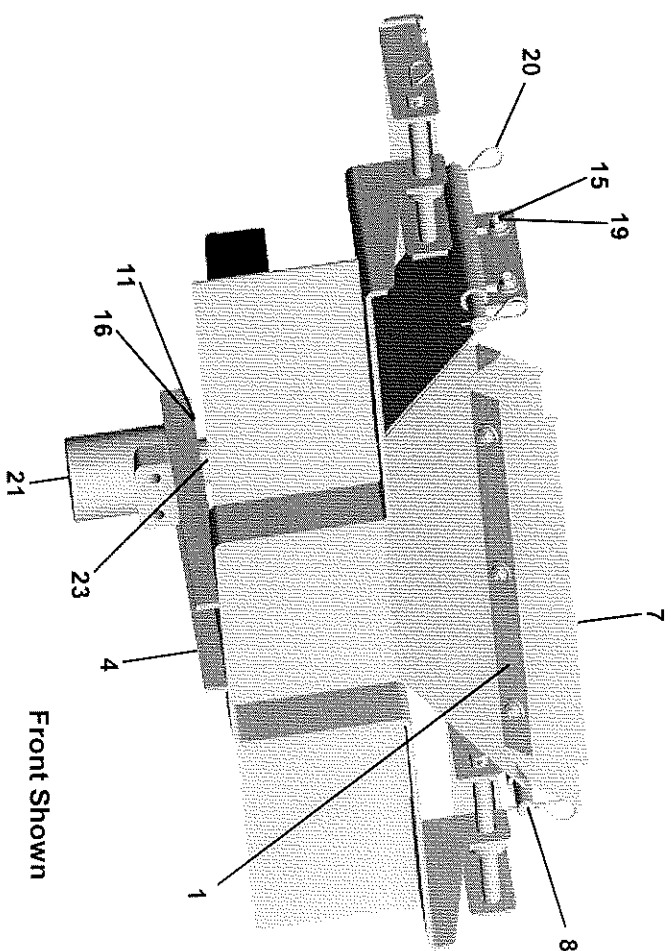


NOTE: If your unit is equipped with conveyor reversing capability, it will be necessary to check the slack condition more often so chain "bunching" does not occur at top-front of conveyor when conveyor is operated in rear direction.

8. **YOUR SPREAD PATTERN** is largely determined by the ease at which material slides off the spinner blades. Periodically inspect spinner and blades, and remove any material that may be sticking to them.



Rear Shown



Front Shown

18" POLY SPINNER AND CHUTE ASSEMBLY

00120-618-01 Carbon Steel

<u>Item</u>	<u>Part Number</u>	<u>Required</u>	<u>Description</u>
1	00102-859-01	1	Bar, Wiper Backup, S3
2	00106-314-00	2	Lock, Spinner, S3
3	00110-692-01	2	Bracket, Accessory Mtg, S3
4	00117-522-02	1	Weld, Spinner Frame-Appb2, S3
5	00117-524-02	2	Rod, Spinner-Appb2, S3
6	00120-620-00	1	Weld, Conv. New Chute
7	00120-621-00	1	Blade, Wiper, Appb Spinner
8	00120-622-00	2	Bar, Mounting, S3
9	04003-002-21	4	Bolt, 5/16-18 X 1 1/2 Hh Ss
10	04003-002-26	1	Bolt, 5/16-18 X 1 1/4 Hh Ss
11	04003-003-24	4	Bolt, 3/8-16 X 3/4 Hh Ss
12	04003-003-26	3	Bolt, 3/8-16 X 1 1/4 Hh Ss
13	04003-033-03	4	Bolt, 3/8-16 X 1 Car Ss
14	04003-806-12	7	Nut, 3/8-16 Ser Flange Ss
15	04003-806-13	4	Nut, 5/16-18 Ser Flange Ss
16	04004-001-14	4	Lockwasher, 3/8" Med Spilt Ss
17	04004-001-20	1	Lockwasher, 5/16" Med Spilt Ss
18	04004-002-20	7	Flatwasher, 3/8" U.S.S. Ss
19	04004-002-25	5	Flatwasher, 5/16" U.S.S. Ss
20	04011-001-02	8	Keeper, Hairpin Large
21	04101-035-00	1	Motor, Hydraulic (3 Cid)
22	04622-002-00	1	Disc, Poly Spinner 18"
23	06012-003-00	1	Machining, Spinner Hub

18" POLY SPINNER AND CHUTE ASSEMBLY

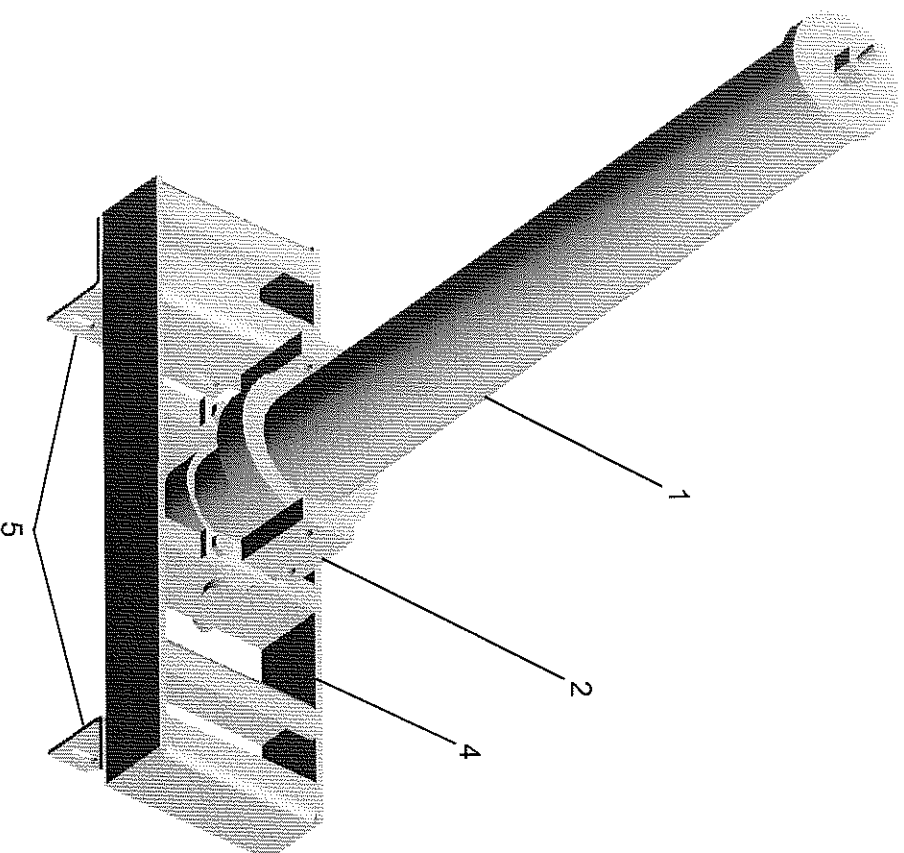
00120-618-02 Stainless Steel

<u>Item</u>	<u>Part Number</u>	<u>Required</u>	<u>Description</u>
1	00102-859-00	1	Bar, Wiper Backup, S3
2	00106-314-00	2	Lock, Spinner, S3
3	00110-692-00	2	Bracket, Accessory Mtg, S3
4	00117-522-01	1	Weld, Spinner Frame-Appb2, S3
5	00117-524-01	2	Rod, Spinner-Appb2, S3
6	00120-620-00	1	Weld, Conv. New Chute
7	00120-621-00	1	Blade, Wiper, Appb Spinner
8	00120-622-00	2	Bar, Mounting, S3
9	04003-002-06	4	Bolt, 5/16-18 X 1 1/2 Hh Ss
10	04003-002-26	1	Bolt, 5/16-18 X 1 1/4 Hh Ss
11	04003-003-01	4	Bolt, 3/8-16 X 3/4 Hh Ss
12	04003-003-04	3	Bolt, 3/8-16 X 1 1/4 Hh Ss
13	04003-033-02	4	Bolt, 3/8-16 X 1 Car Ss
14	04003-806-01	4	Nut, 3/8-16 Ser Flange Ss
15	04003-806-02	7	Nut, 5/16-18 Ser Flange Ss
16	04004-001-07	4	Lockwasher, 3/8" Med Spilt Ss
17	04004-001-20	1	Lockwasher, 5/16" Med Spilt Ss
18	04004-002-07	5	Flatwasher, 3/8" U.S.S. Ss
19	04004-002-08	7	Flatwasher, 5/16" U.S.S. Ss
20	04011-001-02	8	Keeper, Hairpin Large
21	04101-035-00	1	Motor, Hydraulic (3 Cid)
22	04622-002-00	1	Disc, Poly Spinner 18"
23	06012-003-00	1	Machining, Spinner Hub

HOIST

(00002-208-XX)

<u>Item</u>	<u>Part Number</u>	<u>Qty.</u>	<u>Description</u>
1	04107-023-06	1	Cylinder Hydraulic Hoist (8' Body Length)
	04107-023-05	1	Cylinder, Hydraulic Hoist (9', 10' Body Length)
	04107-023-08	1	Cylinder, Hydraulic Hoist (Dbl. Act. 9' - 10')
	04107-023-04	1	Cylinder, Hydraulic Hoist (12', 13' & 14' Body)
	04107-023-07	1	Cylinder, Hydraulic Hoist (Dlb. Act. 12', 13' &
2	04107-024-03	2	Blocks, Upper w/Bolts (8' - 11' Body Length)
	04107-024-06	2	Blocks, Upper w/Bolts (12' - 14' Body Length)
4	00112-494-01	1	Weld, Lift Frame (8' - 11' Body Length)
	00112-494-03	1	Weld, Lift Frame (12' - 14")
	00112-492-01	2	Angle, Frame Mounting (8' - 11' Body Length)
5	00112-492-02	2	Angle, Frame Mounting (12' - 14' Body Length)



CONVEYOR ASSEMBLY

X-0130-106-8 Stainless Steel

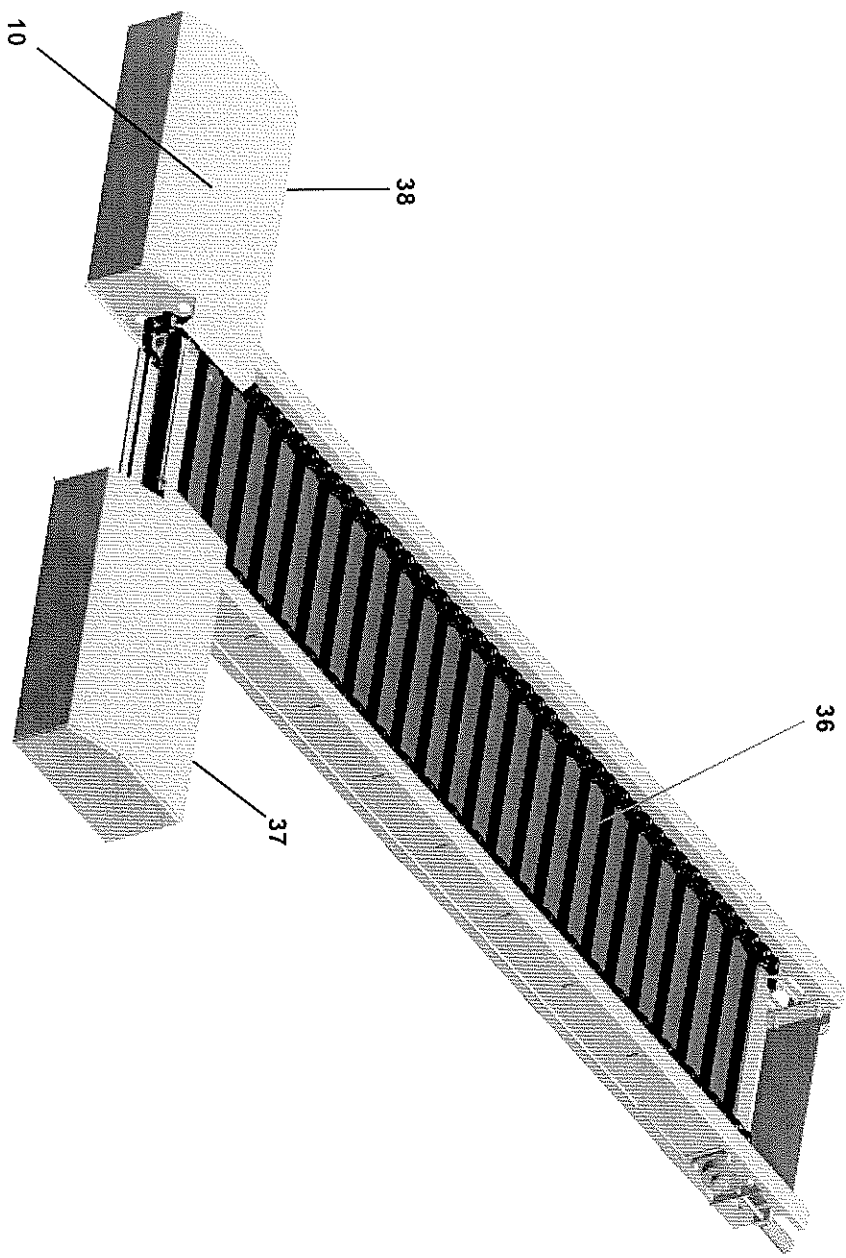
<u>Item</u>	<u>Part Number</u>	<u>Qty</u>	<u>Description</u>	<u>Item</u>	<u>Part Number</u>	<u>Qty</u>	<u>Description</u>
1	00102-859-01	1	Bar, Wiper Backup, S3	35	04121-003-01	2	Adapter, 1/8" Swivel
2	00105-534-00	2	Piece, Nose, 7g, S3	36	04607-024-00	10	Clamp, Cushioned 3/8" Loop SS
3	00107-432-02	2	Pipe, Threaded	37	04614-001-00	2	Adapter, 1/4" - 28-M X 1/8" NPTF-F
4	00117-466-02	1	Weld, Conveyor Idler Shaft, S3	38	X-0130-097-02	1	Plate, Conv. Asph Cover R.H.Ss
5	04002-033-00	20	Rivet, 3/16" S.S. Pop	39	X-0130-098-02	1	Plate, Conv. Asph Cover L.H.S3
6	04002-069-02	10	Screw, #10-24x3/4nwh TekS/3 Ss	40	X-0130-099-08	1	Floor, Conveyor, S3
7	04003-003-26	3	Bolt, 3/8-16 X 1 1/4 Hh Ss	41	X-0130-101	5	Plate, Conveyor Slide
8	04003-006-21	4	Bolt, 5/8-11 X 1 3/4 Hh Ss	42	X-0130-105-08	1	Weld, Conveyor Frame
9	04003-018-05	4	Screw, 3/8-16 X 1 1/4 Slr Flss	43	X-0130-108-02	1	Assy, Gearbox Sprocket Bear.Ss
10	04003-033-03	8	Bolt, 3/8-16 X 1 Car Ss	44	X-0130-110-02	1	Weld, Front, Cover, Ss
11	04003-034-15	8	Bolt, 1/2-13 X1 1/2 Car Sht Nk	45	X-0130-113-02	2	Weld, Conv Bearing Slide, Ss
12	04003-035-09	16	Bolt, 5/8-11 X 2 Car Sht Nk Ss	46	00102-118-00	1	Assy, Drag Chain
13	04003-801-22	4	Nut, 5/8-11 Hex Ss				
14	04003-802-09	4	Nut, 1/2-13 Hex Jam Ss				
15	04003-804-07	8	Locknut, 1/2-13 Nyl Ins Ss				
16	04003-804-08	4	Locknut, 3/8-16 Nyl Ins Ss				
17	04003-806-12	11	Nut, 3/8-16 Ser Flange Ss				
18a	04004-001-15	8	Lockwasher, 5/8" Med Split Ss				
18b	04003-801-22	8	Nut, 5/8-11 Hex SS				
19	04004-001-15	4	Lockwasher, 5/8" Med Split SS				
20	04004-002-20	7	Flatwasher, 3/8" U.S.S. Ss				
21	04004-002-22	2	Flatwasher, 1/2" U.S.S. Ss				
22	04004-002-49	2	Flatwasher, 5/8 U.S.S., S.S.				
23	04007-009-05	2	Setscrew, 3/8-16 X 1/2" Al. Hd				
24	04014-150-02	1	Pin, Bent Hitch				
25	04015-001-00	2	Fitting, Zerk, 1/8"Npt, Straight				
26	04042-030-00	1	Sprocket, Forged, 8t				
27	04045-044-00	2	Pin, Master				
28	04045-048-00	2	Key, Cotter				
29	04080-047-00	2	Bearing, 1 1/2"				
30	04080-059-00	1	Bearing, 2"				
31	04086-005-00	1	Blade, Wiper				
32	04091-023-00	2	Spring, Compression				
33	04110-003-01	4	Coupling, 1/8"				
34	04120-047-02	2	Hose, 1/8" X 7 3/8" Grease				

CONVEYOR ASSEMBLY

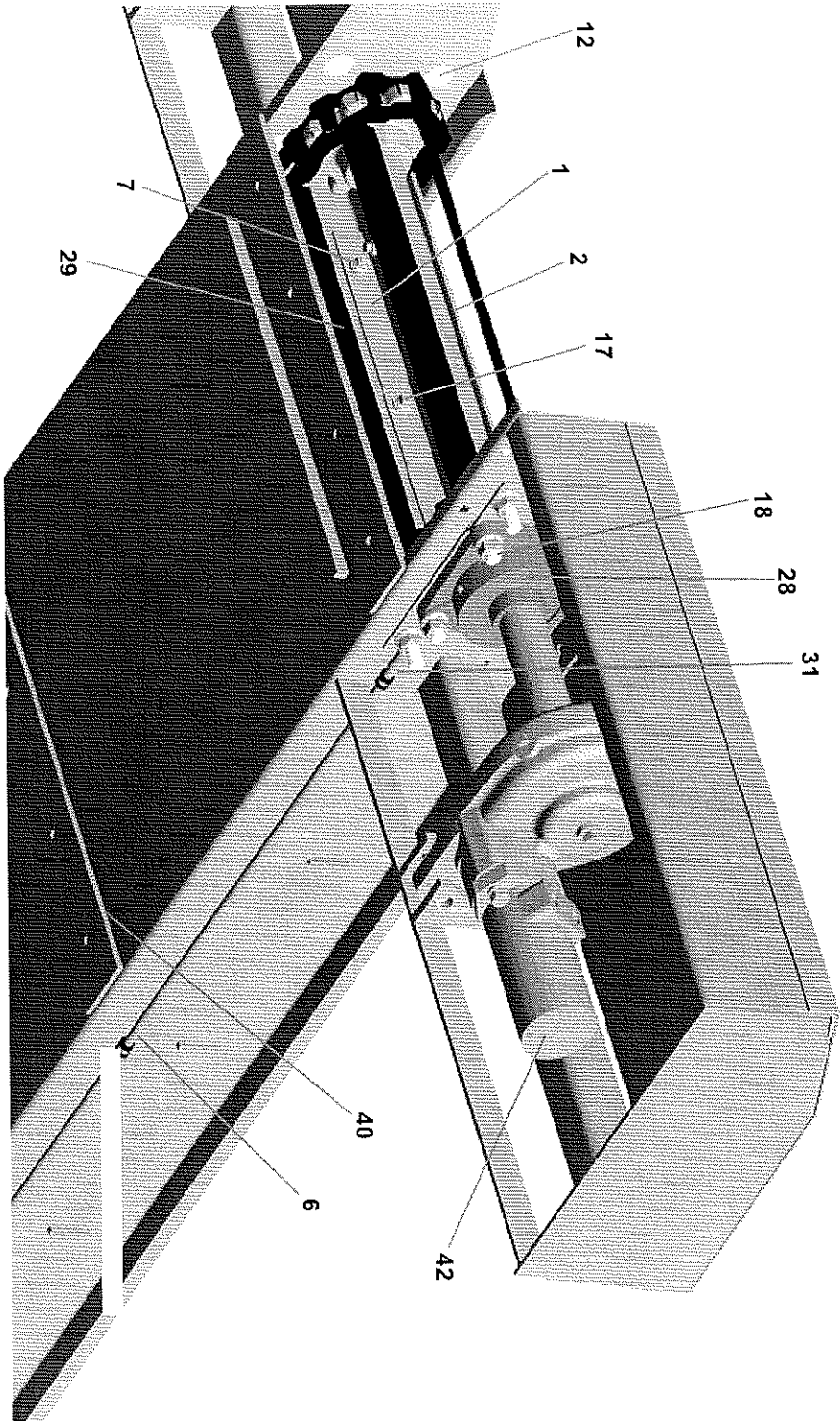
X-0130-106-11 Carbon Steel

<u>Item</u>	<u>Part Number</u>	<u>Qty</u>	<u>Description</u>	<u>Item</u>	<u>Part Number</u>	<u>Qty</u>	<u>Description</u>
1	00102-859-00	1	Bar, Wiper Backup	33	04110-003-01	4	Coupling, 1/8"
2	00105-534-00	2	Piece, Nose, 7g, S3	34	04120-047-02	2	Hose, 1/8" X 7 3/8" Grease
3	00107-432-04	2	Pipe, Threaded	35	04121-003-01	2	Adapter, 1/8" Swivel
4	00117-466-02	1	Weld, Conveyor Idler Shaft, S3	36	04607-024-00	12	Clamp, cushioned 3/8" Loop SS
5	04002-033-00	24	Rivet, 3/16" S.S. Pop	37	04614-001-00	2	Adapter, 1/4" -28-M X 1/8" NPTF-F
6	04002-069-02	12	Screw, #10-24x3/4hwh Teks/3 Ss	38	04045-398-05	1	Weld, Drag Chain, 11", 1/4" 8th
7	04003-003-04	3	Bolt, 3/8-16 X 1 1/4 Hh Gr5 Zp	39	X-0130-097-03	1	Plate, Conv. Asph Cover R.H.
8	04003-006-03	4	Bolt, 5/8-11 X 1 1/2 Hh Gr5 Zp	40	X-0130-098-03	1	Plate, Conv.Asph Cover L.H.
9	04003-018-04	4	Screw, 3/8-16 X 1 1/4 Slit Fl H	41	X-0130-099-11	1	Floor, Conveyor
10	04003-033-02	8	Bolt, 3/8-16 X 1 Car Gr5 Zp	42	X-0130-101	6	Plate, Conveyor Slide
11	04003-034-06	8	Bolt, 1/2-13 X1 1/2car Sht Nk	43	X-0130-105-11	1	Weld, Conveyor Frame, Cs
12	04003-035-03	8	Bolt, 5/8-11 X1 3/4 Car Sht Nk	44	X-0130-108-03	1	Assy, Gearbox Sprocket Bearing
13	04003-801-12	4	Nut, 5/8-11 Hex Zinc Plate	45	X-0130-110-03	1	Weld, Front Cover
14	04003-802-05	4	Nut, 1/2-13 Hex Jam Zp	46	X-0130-113-03	2	Weld, Conv. Bearing Slide
15	04003-804-02	4	Locknut, 3/8-16 Nyl Ins Zp				
16	04003-804-06	8	Locknut, 1/2-13 Nyl Ins Zp				
17	04003-806-02	11	Nut, 3/8-16 Serrated Flange Zp				
18	04003-806-04	8	Nut, 5/8-11 Serrated Flange Zp				
19	04004-001-10	4	Lockwasher, 5/8" Med Split Zp				
20	04004-002-08	7	Flatwasher, 3/8" U.S.S. Zp				
21	04004-002-10	2	Flatwasher, 1/2" U.S.S. Zp				
22	04004-002-15	2	Flatwasher, 5/8" Zp				
23	04007-009-05	2	Setscrew, 3/8-16 X 1/2" Al. Hd				
24	04014-150-02	2	Pin, Bent Hitch				
25	04015-001-00	2	Fitting, Zerk, 1/8"Npt, Straight				
26	04042-030-00	1	Sprocket, Forged, 8t				
27	04045-044-00	2	Pin, Master				
28	04045-048-00	2	Key, Cotter				
29	04080-047-00	2	Bearing, 1 1/2"				
30	04080-059-00	1	Bearing, 2"				
31	04086-005-00	1	Blade, Wiper				
32	04091-023-00	2	Spring, Compression				

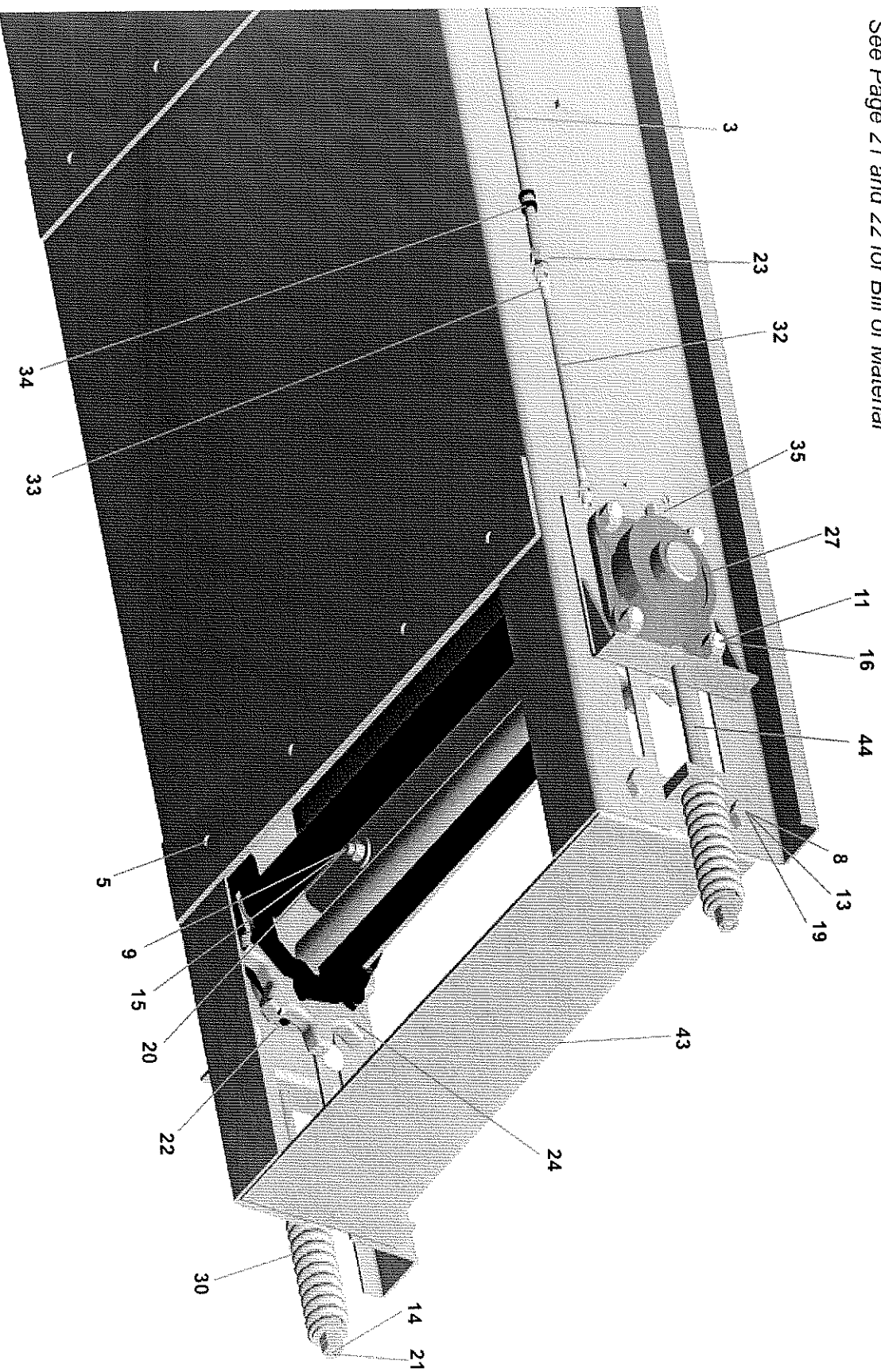
See Page 21 and 22 for Bill of Material

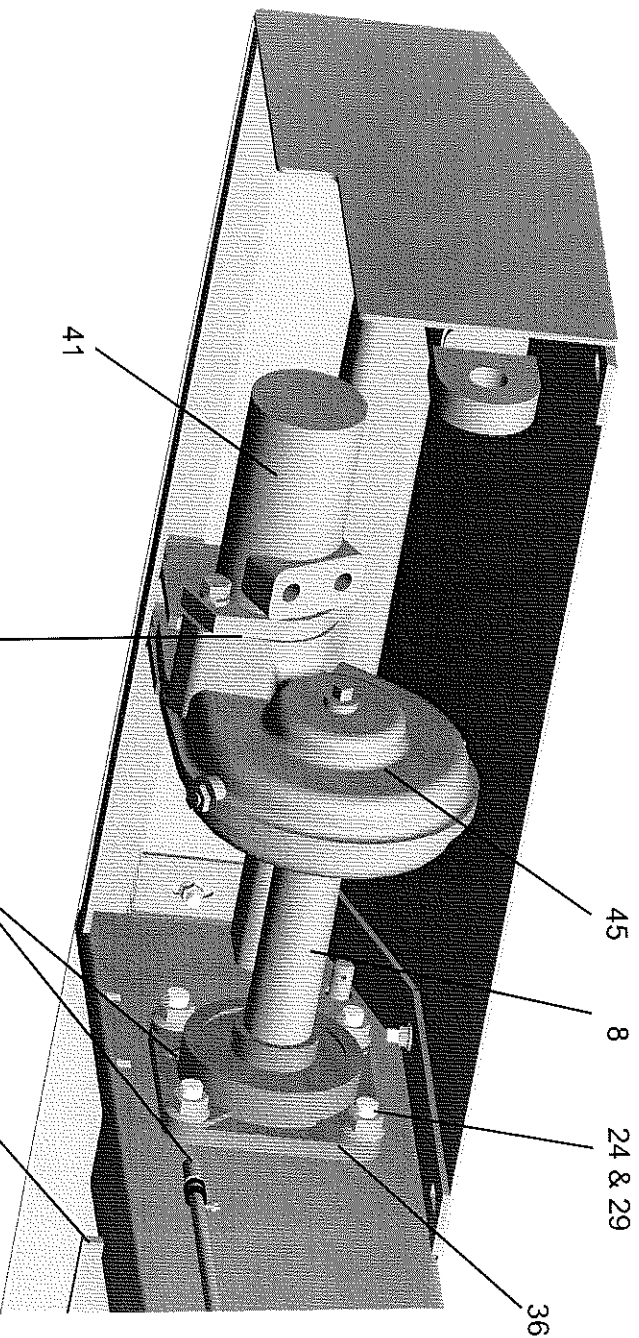


See Page 21 and 22 for Bill of Material



See Page 21 and 22 for Bill of Material





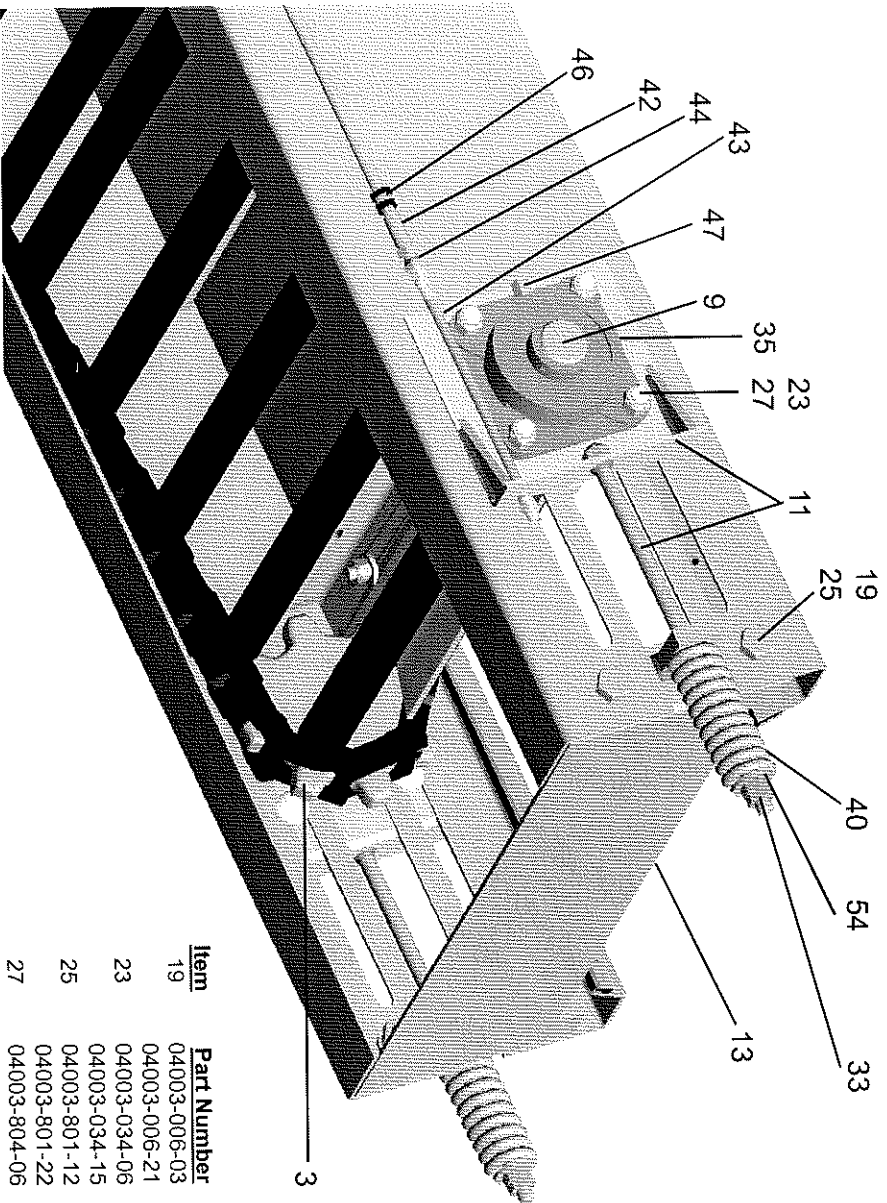
CONVEYOR ASSEMBLY

(00002-438-XX Carbon & Stainless Steel)

<u>Item</u>	<u>Part Number</u>	<u>Qty.</u>	<u>Description</u>
1	00102-859-00	1	Bar, Wiper Backup, Carbon
	00102-859-01	1	Bar, Wiper Backup, Stainless Steel
8	00117-464-01	1	Shaft, Conveyor Drive, Carbon
	00117-464-02	1	Shaft, Conveyor Drive, Stainless Steel
24	04003-035-03	8	Bolt, 5/8-11 X 1 3/4" Carriage Short Neck
	04003-035-09	8	Bolt, 5/8-11 X 2" Carriage, SS
29	04003-806-04	8	Nut, 5/8-11 Serrated Flange, ZP
34	04015-001-00	2	Fitting, 1/8" Straight Grease
36	04080-059-00	2	Bearing, 2"
37	04084-033-00	1	Gasket, Gearbox
38	04086-005-00	1	Blade, Wiper
41	04101-101-00	1	Motor, Hydraulic (AP)

<u>Item</u>	<u>Part Number</u>	<u>Qty.</u>	<u>Description</u>
45	04132-121-00	1	Gearbox, 6:1 Spur Gear
	04132-121-01	1	Input Shaft w/Spur Gear
	04132-121-02	1	Washer
	04132-121-03	3	Plug, Hex Head Socket
	04132-121-04	1	Socket Cap Screw
	04132-121-05	1	Body
	04132-121-06	1	Output Spur Gear
	04132-121-07	3	Bearing, Large
	04132-121-08	1	Seal, Oil
	04132-121-09	1	Body
	04132-121-10	1	Bearing, Small
	04132-121-11	9	Hex Cap Screw
	04132-121-12	9	Lockwasher
	04132-121-13	1	Plug, Breather

1 & 38

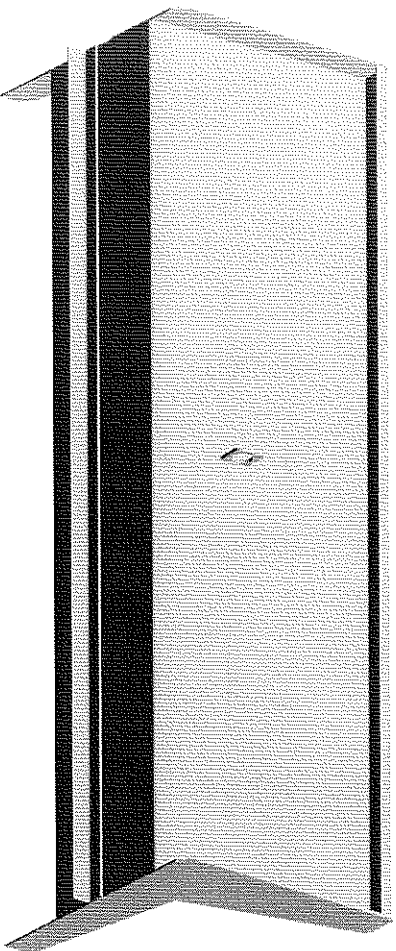


CONVEYOR ASSEMBLY

(00002-438-XX Carbon & Stainless Steel)

Item	Part Number	Qty.	Description
3	04042-030-00	1	Sprocket, Forged, 8T
	00106-656-00	1	Machining, Sprocket, SS Units
9	00117-466-01	1	Weld, Conveyor Idler Shaft, Carbon
	00117-466-02	1	Weld, Conveyor Idler Shaft, Stainless Steel
11	00117-470-01	2	Weld, Conveyor Bearing Slide, Carbon
	00117-470-02	2	Weld, Conveyor Bearing Slide, Stainless Steel
13	00117-490-01	1	Weld, Front Cover, Carbon
	00117-490-02	1	Weld, Front Cover, Stainless Steel

Item	Part Number	Qty.	Description
19	04003-006-03	4	Bolt, 5/8-11 X 1 1/2" HH GR5, ZP
	04003-006-21	4	Bolt, 5/8-11 X 1 3/4" HH, SS
23	04003-034-06	8	Bolt, 1/2-13 X 1 1/2" Carriage Short Neck, ZP
	04003-034-15	8	Bolt, 1/2-13 X 1 1/2" Carriage Short Neck, SS
25	04003-801-12	4	Nut, 5/8-11 Hex, ZP
	04003-801-22	4	Nut, 5/8-11 Hex, SS
27	04003-804-06	8	Locknut, 1/2-13 Nylon Insert ZP
	04003-804-07	8	Locknut, 1/2-13 Nylon Insert, SS
33	04003-802-05	4	Nut, 1/2-13 Hex Jam, ZP
	04003-802-09	4	Nut, 1/2-13 Hex Jam, SS
	04080-047-00	2	Bearing, 1 1/2"
35	04091-023-00	2	Spring, Compression
40	04110-003-01	4	Coupling, 1/8"
42	04120-047-02	2	Hose, 1/8" x 7 3/8" Grease
43	04121-003-01	2	Adapter, 1/8" Swivel
44	04121-003-01	2	Clamp, Cushioned 3/8" Loop, SS
46	04607-024-00	4	Adapter, 1/4"-28(M) X 1/8" NPTF (F)
47	04614-001-00	2	Flatwasher, 1/2" U.S.S., ZP
54	04004-002-10	2	Flatwasher, 1/2" U.S.S., SS
	04004-002-22	2	

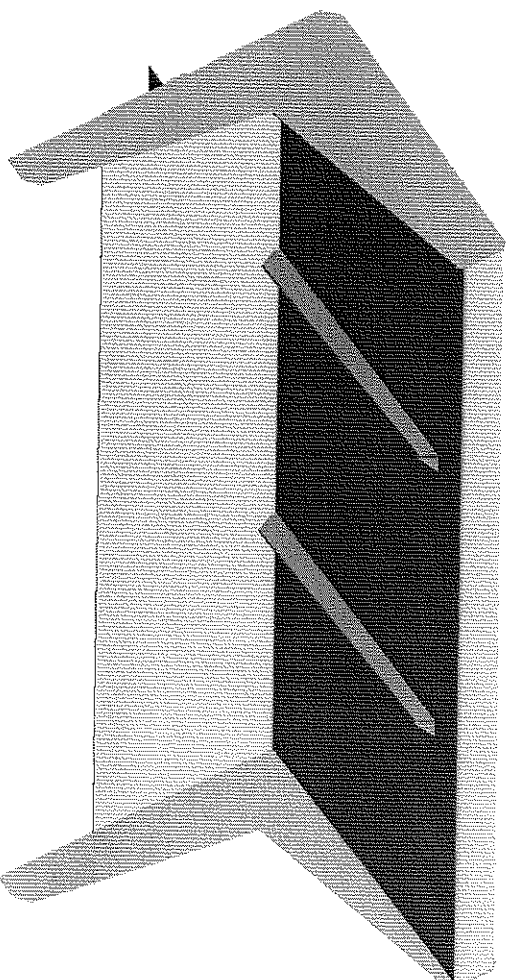


CAB SHIELD FRONT VIEW (STAINLESS STEEL)

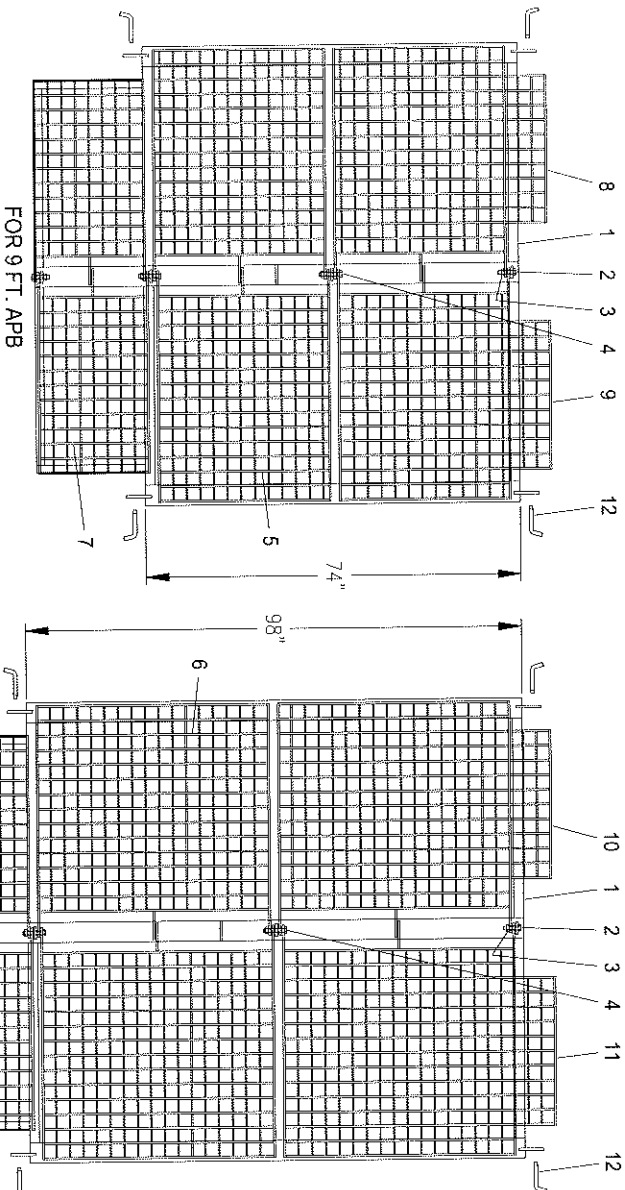
Item	Part Number	Qty.	Description
1	00002-212-09	1	Cab Shield 24-28" Side Height X 79 1/2" Width
	00002-212-0A	1	Cab Shield 30-34" Side Height X 79 1/2" Width
	00002-212-0B	1	Cab Shield 36-40" Side Height X 79 1/2" Width
	00002-212-0C	1	Cab Shield 42-46" Side Height X 79 1/2" Width
	00002-212-0D	1	Cab Shield 24-28" Side Height X 84" Width
	00002-212-0E	1	Cab Shield 30-34" Side Height X 84" Width
	00002-212-0F	1	Cab Shield 36-40" Side Height X 84" Width
	00002-212-0G	1	Cab Shield 42-46" Side Height X 84" Width

CAB SHIELD BACK VIEW (CARBON)

Item	Part Number	Qty.	Description
1	00002-212-01	1	Cab Shield 24-28" Side Height X 79 1/2" Width
	00002-212-02	1	Cab Shield 36-40" Side Height X 79 1/2" Width
	00002-212-03	1	Cab Shield 42-46" Side Height X 79 1/2" Width
	00002-212-04	1	Cab Shield 30-34" Side Height X 79 1/2" Width
	00002-212-05	1	Cab Shield 24-28" Side Height X 84" Width
	00002-212-06	1	Cab Shield 30-34" Side Height X 84" Width
	00002-212-07	1	Cab Shield 36-40" Side Height X 84" Width
	00002-212-08	1	Cab Shield 42-46" Side Height X 84" Width



LIFT-IN/LIFT-OUT TOP SCREENS

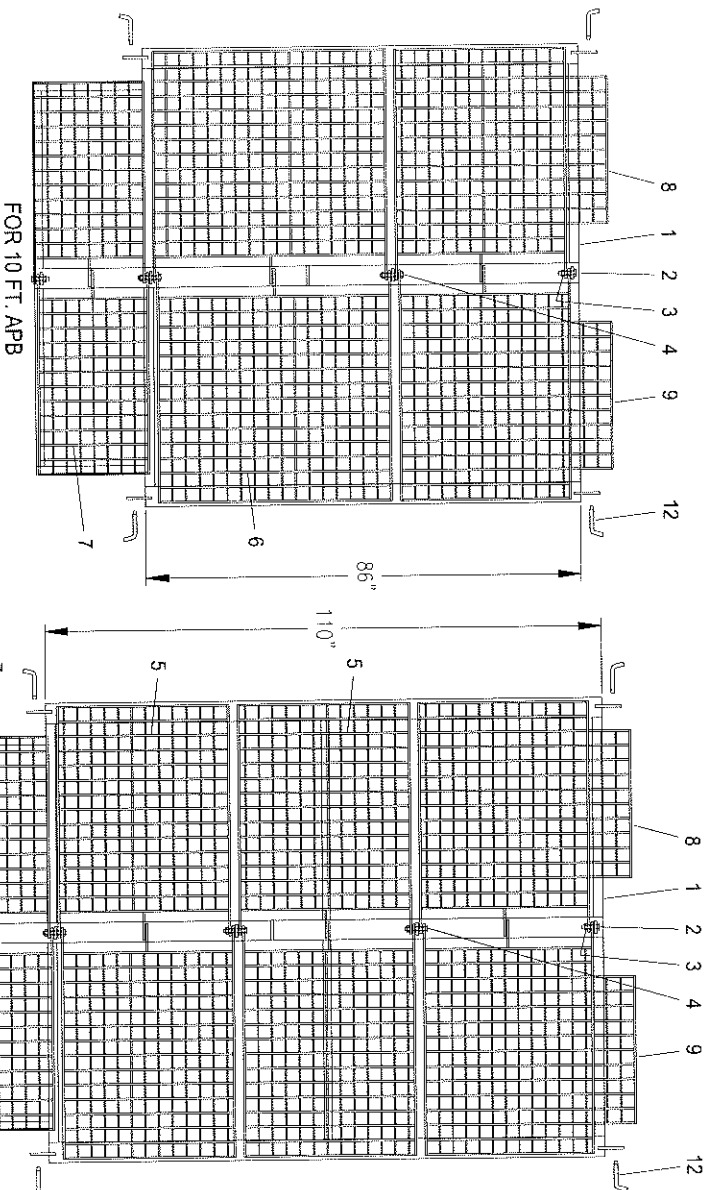


A/N = As needed depending
upon length of your unit.
(Specify quantity when
ordering.)

Item	Part Number	Qty.	Description
1	00116-936-02	1	Weldment, Screen Frame, 9 Ft.
2	00116-936-04	1	Weldment, Screen Frame, 11 Ft.
3	04003-007-06	2	Bolt, 3/4"-10 X 3" HH Gr 5, ZP
4	04003-807-13	A/N	Locknut, 3/4"-10 Top Lock, ZP
5	04003-007-07	A/N	Bolt, 3/4"-10 X 4" HH Gr 5, ZP
6	00116-781-01	A/N	Weldment, 3 Ft. Screen
	00116-782-01	A/N	Weldment, 4 Ft. Screen

Item	Part Number	Qty.	Description
7	00117-408-01	2	Weldment, Rear Fill Screen
8	00117-415-01	1	Weldment, Left Front 3 Ft. Screen
9	00117-416-01	1	Weldment, Right Front 3 Ft. Screen
10	00117-417-01	1	Weldment, Left Front 4 Ft. Screen
11	00117-418-01	1	Weldment, Right Front 4 Ft. Screen
12	04014-150-05	4	Pin, Bent (Carbon Steel)
	04014-150-06	4	Pin, Bent (Stainless Steel)

LIFT-IN/LIFT-OUT TOP SCREENS



Z:\00113\30500\SCREENSA

FOR 12 FT. APB

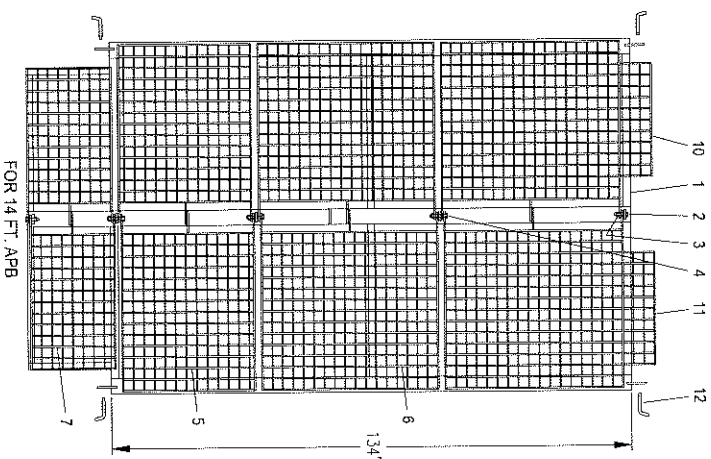
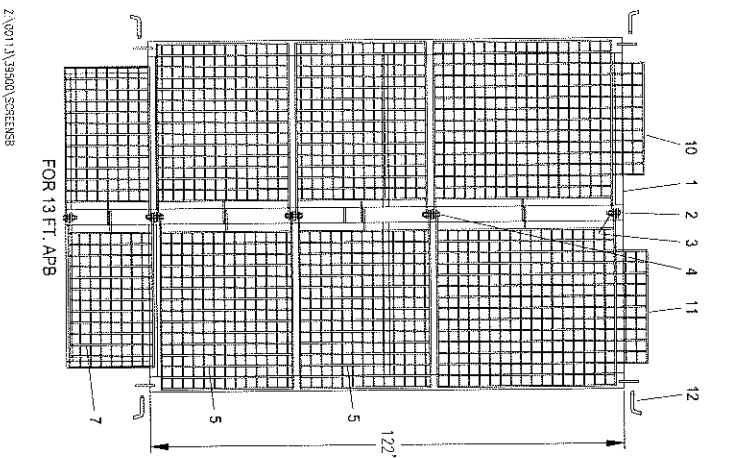
A/N = As needed depending upon length of your unit.
(Specify quantity when ordering.)

Item	Part Number	Qty.	Description
1	00116-936-03	1	Weldment, Screen Frame, 10 Ft.
2	00116-936-05	1	Weldment, Screen Frame, 12 Ft.00116-936-06
3	04003-007-06	2	Bolt, 3/4"-10 X 3" HH Gr 5, ZP
4	04003-807-13	A/N	Locknut, 3/4"-10 Top Lock, ZP
5	04003-007-07	A/N	Bolt, 3/4"-10 X 4" HH Gr 5, ZP
6	00116-781-01	A/N	Weldment, 3 Ft. Screen
	00116-782-01	A/N	Weldment, 4 Ft. Screen

Item	Part Number	Qty.	Description
7	00117-408-01	2	Weldment, Rear Fill Screen
8	00117-415-01	1	Weldment, Left Front 3 Ft. Screen
9	00117-416-01	1	Weldment, Right Front 3 Ft. Screen
10	00117-417-01	1	Weldment, Left Front 4 Ft. Screen
11	00117-418-01	1	Weldment, Right Front 4 Ft. Screen
12	04014-150-05	4	Pin, Bent (Carbon Steel)
	04014-150-06	4	Pin, Bent (Stainless Steel)

LIFT-IN/LIFT-OUT TOP SCREENS

(Continued)



A/N = As needed depending
upon length of your unit.
(Specify quantity when
ordering.)

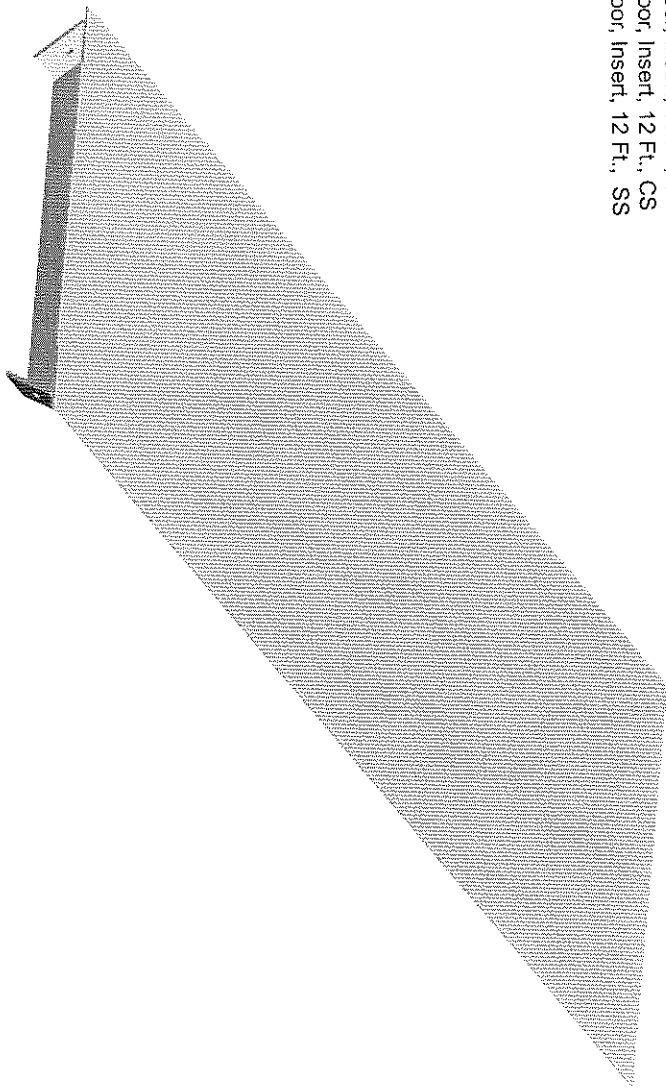
Item	Part Number	Qty.	Description
1	00116-936-06	1	Weldment, Screen Frame, 13 Ft.
	00116-936-07	1	Weldment, Screen Frame, 14 Ft.
2	04003-007-06	2	Bolt, 3/4"-10 X 3" HH Gr 5, ZP
3	04003-807-13	A/N	Locknut, 3/4"-10 Top Lock, ZP
4	04003-007-07	A/N	Bolt, 3/4"-10 X 4" HH Gr 5, ZP
5	00116-781-01	A/N	Weldment, 3 Ft. Screen
6	00116-782-01	A/N	Weldment, 4 Ft. Screen

Item	Part Number	Qty.	Description
7	00117-408-01	2	Weldment, Rear Fill Screen
8	00117-415-01	1	Weldment, Left Front 3 Ft. Screen
9	00117-416-01	1	Weldment, Right Front 3 Ft. Screen
10	00117-417-01	1	Weldment, Left Front 4 Ft. Screen
11	00117-418-01	1	Weldment, Right Front 4 Ft. Screen
12	04014-150-05	4	Pin, Bent (Carbon Steel)
	04014-150-06	4	Pin, Bent (Stainless Steel)

FLOOR INSERT

X-0130-115-XX

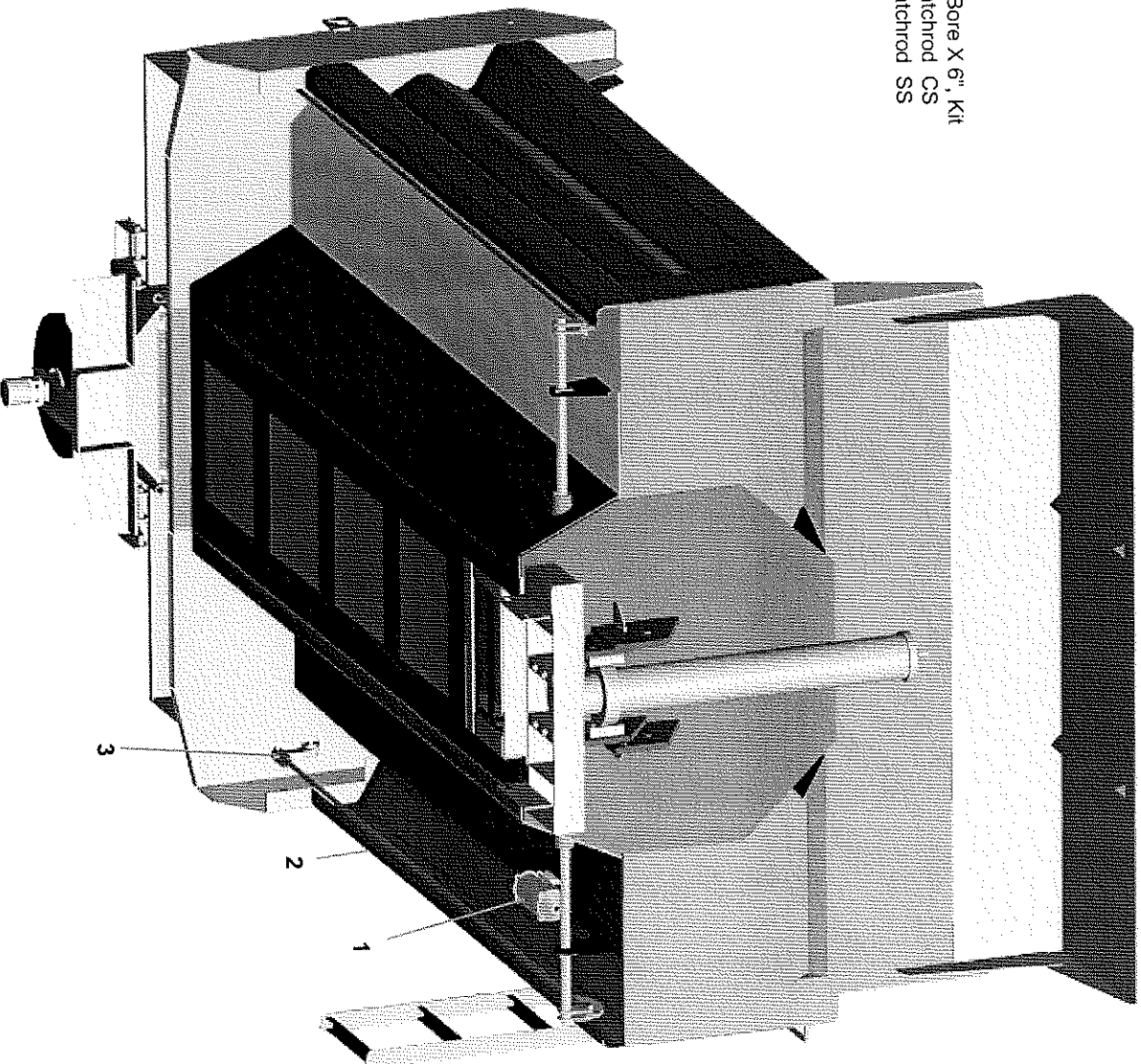
<u>Item</u>	<u>Part Number</u>	<u>Qty.</u>	<u>Description</u>
1	X-0130-115-07	1	Floor, Insert, 10 Ft., CS
	X-0130-115-08	1	Floor, Insert, 10 Ft., SS
	X-0130-115-11	1	Floor, Insert, 12 Ft., CS
	X-0130-115-12	1	Floor, Insert, 12 Ft., SS

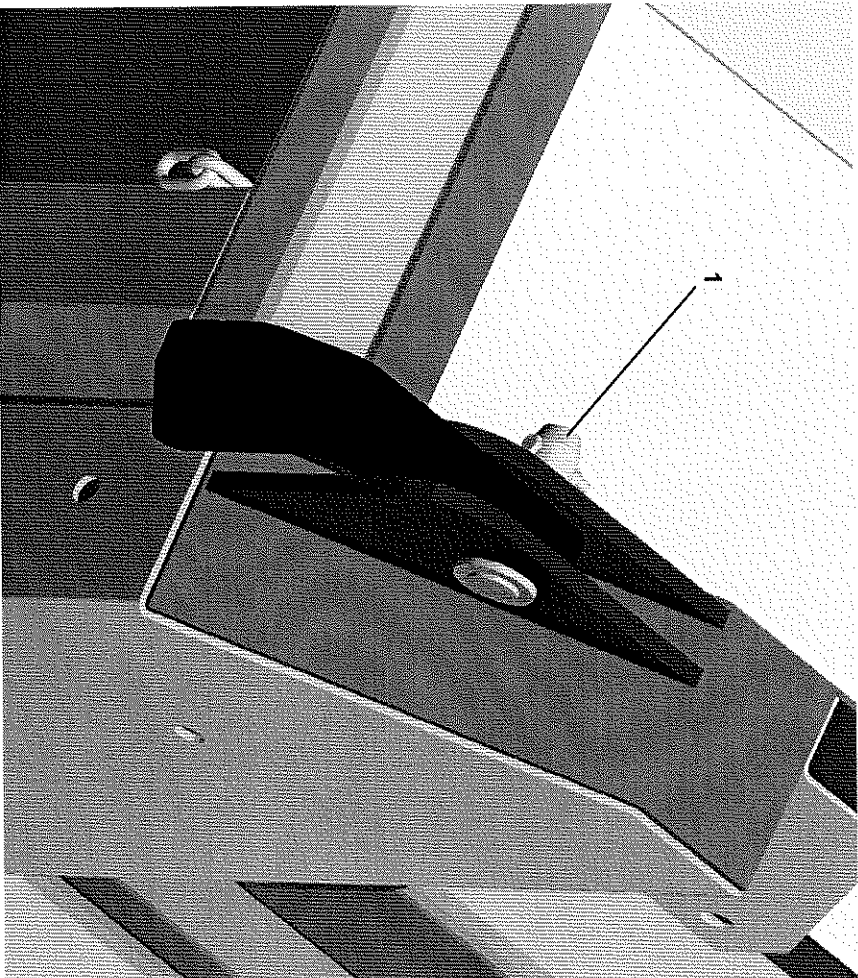


LINKAGE LATCH

(Carbon & Stainless Steel)

<u>Item</u>	<u>Part Number</u>	<u>Qty.</u>	<u>Description</u>
1	04108-006-00	1	Cylinder, 3.5" Bore X 6", Kit
2	00120-509-03		Weldment, Latchrod CS
	00120-509-04		Weldment, Latchrod SS
3	04096-003-00	2	End, Yoke





HINGE PIN

(Carbon & Stainless Steel)

<u>Item</u>	<u>Part Number</u>	<u>Qty.</u>	<u>Description</u>
1	00112-529-00	2	Pin, Hinge

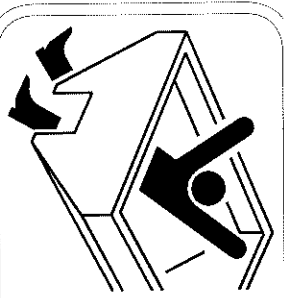
DECAL GROUP

CAUTION

1. KEEP ALL SHIELDS IN PLACE.
2. MAKE CERTAIN EVERYONE IS CLEAR BEFORE STARTING MACHINE OR MOVING VEHICLE.
3. KEEP HANDS, FEET, AND CLOTHING AWAY FROM ALL POWER DRIVEN PARTS.
4. DISENGAGE PTO, SHUT OFF HYDRAULIC VALVE, AND SET PARKING BRAKE BEFORE LEAVING OPERATORS POSITION. MAKE SURE ALL MOVEMENT HAS STOPPED BEFORE SERVICING, UNCLOGGING, OR CLEANING MACHINE.
5. USE FLASHING LIGHTS WHEN OPERATING MACHINE.
6. MAKE SURE MACHINE IS SOLIDLY SUPPORTED WHEN IT IS BEING MOUNTED, DISMOUNTED, OR STORED.

IF DEFAECED - ORDER PART NO. 04049 045 00

NOTE:
DECALS HAVE BEEN SHOWN LARGE ENOUGH
SO INFORMATION CAN BE EASILY READ.
DECALS ARE NOT PROPORTIONALLY SIZED
WITH REFERENCE TO EACH OTHER.



DANGER

Turn power off before
servicing or cleaning

IF DEFAECED - ORDER PART NO. 04049 132 00



DANGER

Stay clear while
spinner is turning

IF DEFAECED - ORDER PART NO. 04049 044 00

DANGER

DO NOT GO UNDER A RAISED LOADED BODY.

DO NOT GO UNDER A RAISED BODY WITHOUT PROPPING IT-BODY MUST BE EMPTY.
DURING DUMPING OPERATIONS NO ONE SHALL STAND IN OR MOVE THROUGH THE AREA WHERE THE BODY AND THE HOIST OPERATE OR LOAD MIGHT DISCHARGE.
OPERATOR MUST REMAIN AT CONTROLS IN CAB DURING DUMPING OPERATIONS.
DO NOT LEAVE BODY RAISED OR PARTLY RAISED WHILE VEHICLE IS UNATTENDED OR WHILE PERFORMING MAINTENANCE OR SERVICE UNDER BODY UNLESS BODY IS PROPPED TO PREVENT ACCIDENTAL LOWERING.
ALWAYS DISENGAGE PTO WHEN HOIST IS NOT IN USE OR WHEN MOVING VEHICLE.
DO NOT ATTEMPT TO RAISE A LOADED BODY WHEN VEHICLE IS ON UNLEVEL GROUND.

IF DEFAECED - ORDER PART NO. 04049 321 00

DANGER

DO NOT GO UNDER A RAISED LOADED BODY.

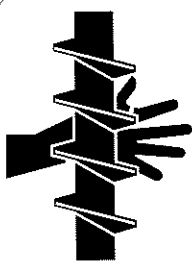
DO NOT GO UNDER A RAISED BODY WITHOUT PROPPING IT
- BODY MUST BE EMPTY.


DO NOT LEAVE RAISED BODY UNATTENDED WITHOUT
PROPPING.

DO NOT POWER DOWN WHILE BODY IS PROPPED. SEE OWNERS
MANUAL FOR CORRECT OPERATION OF BODY PROPS.

IF DEFAECED - ORDER PART NO. 04049 322 00

DECAL GROUP (CONTINUED)






DANGER

Turn power off before servicing or cleaning

IF DEFACED - ORDER PART NO. 04049 323 00



DANGER

DO NOT GO UNDER A RAISED LOADED BODY.


DO NOT GO UNDER A RAISED BODY WITHOUT PROPPING IT - BODY MUST BE EMPTY.

DURING DUMPING OPERATIONS NO ONE SHALL STAND IN OR MOVE THROUGH THE AREA WHERE THE BODY AND HOIST OPERATE OR LOAD MIGHT DISCHARGE.

OPERATOR MUST REMAIN AT CONTROLS IN CAB DURING DUMPING OPERATIONS.

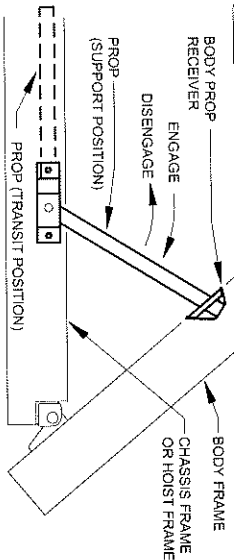
DO NOT LEAVE BODY RAISED OR PARTLY RAISED WHILE VEHICLE IS UNATTENDED OR WHILE PERFORMING MAINTENANCE OR SERVICE UNDER BODY UNLESS BODY IS PROPPED TO PREVENT ACCIDENTAL LOWERING.

IF DEFACED - ORDER PART NO. 04049 323 00



OPERATION OF BODY PROP

BODY MUST BE UNLOADED BEFORE USING PROPS(S)



TO USE THE PROPS:

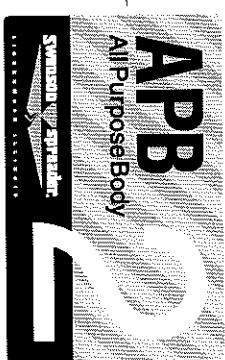
1. RAISE BODY TO HEIGHT WHERE PROPS(S) CAN BE SWINGING UPWARD INTO POSITION. PLACE THE HOIST CONTROL VALVE IN THE NEUTRAL (HOLD) POSITION.
2. SWING PROPS(S) "UP" INTO SUPPORT POSITION.
3. LOWER BODY SLOWLY UNTIL PROPS(S) REST ON BODY PROP RECEIVER. DO NOT POWER HOIST DOWN. PLACE THE HOIST CONTROL VALVE IN THE NEUTRAL (HOLD) POSITION.

TO STORE PROPS(S):

4. RAISE BODY TO A HEIGHT WHERE THE PROPS(S) WILL CLEAR THE PROP RECEIVER. BE SURE THE HOIST CONTROL VALVE IS IN THE NEUTRAL (HOLD) POSITION.
5. SWING PROPS(S) DOWN TO TRANSIT POSITION. BEFORE LOWERING BODY, BE CERTAIN THAT THE AREA IS CLEAR.

NOTE: BODIES OVER 17' ARE EQUIPPED WITH TWO PROPS

IF DEFACED - ORDER PART NO. 04049 324 00



Item	Part Number	Qty.	Description
1	04049-045-00	1	General Caution Decal
2	04049-182-00	3	Conveyor Danger Decal
3	04049-044-00	1	Spinner Danger Decal
4	04049-321-00	2	Body General Danger Decal
5	04049-322-00	2	Truck Frame Danger Decal
6	04049-121-00	1	Auger Danger Decal
7	04049-323-00	2	Body General Danger Decal (Small)
8	04049-324-00	2	Body Prop Operation Decal
9	04049-376-00	3	Swenson Logo/APB 2 Decal
-	00117-516-01	-	Decal Package (Consist of Items 1-9)

SERIAL NUMBER DECAL INFORMATION

When ordering parts or requesting information or assistance, always include the information listed below.

The description, part number and serial number for the spreader is shown on the serial number decal.

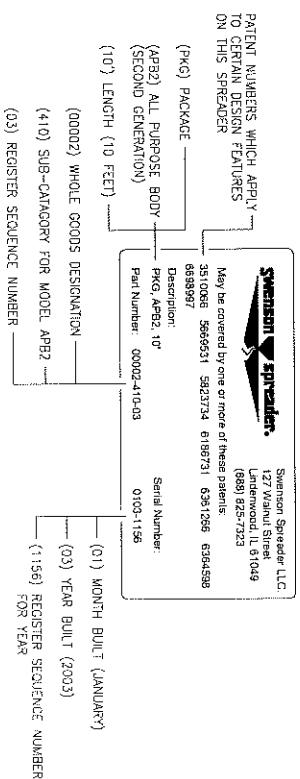
The space below is provided as a convenient place to record these number just fill in the blanks.

DESCRIPTION _____
 PART NUMBER _____
 SERIAL NUMBER _____
 DATE PURCHASED _____
 PURCHASED FROM _____
 DEALER'S SERVICE DEPARTMENT PHONE NUMBER _____

EXPLANATION OF SERIAL NUMBER DECAL

NOTE: Numbers shown on decal below are for example purposes only. Refer to decal on spreader for recording information.

EXPLANATION OF SERIAL NUMBER DECAL



Z:\00111\00111-389-0081090

CALL YOUR AUTHORIZED SWENSON SPREADER DEALER FOR PARTS AND SERVICE
 SWENSON SPREADER (815) 393-4455
 TOLL FREE (888) 825-7323
 FAX (866) 310-0300
 email: swensonsales@swensonspreader.com
 website: www.swensonspreader.com

NOTES:

SWENSON SPREADER LLC
P.O. BOX 127 - LINDENWOOD, ILLINOIS 61049



Effective 5/1/99

Dealers have the responsibility of calling to the attention of their customers the following warranty prior to acceptance of an order from that customer for any SWENSON® product.

WARRANTY

SWENSON warrants to the original purchaser for use that, if any part of the product proves to be defective in material or workmanship within one year from the date of original installation, and is returned to SWENSON within 30 days after such defect is discovered, SWENSON will (at our option) either replace or repair said part. This warranty does not apply to damage resulting from misuse, neglect, accident or improper installation or maintenance. Said part will not be considered defective if it substantially fulfills the performance specifications. THE FOREGOING WARRANTY IS EXCLUSIVE AND IN LIEU OF ALL OTHER WARRANTIES OF MERCHANTABILITY, FITNESS FOR PURPOSE AND OF ANY OTHER TYPE, WHETHER EXPRESS OR IMPLIED. SWENSON® neither assumes nor authorizes anyone to assume for it any other obligation or liability in connection with said part and will not be liable for consequential damages.

All gasoline engines and hydraulic pumps are warranted by their manufacturer and not by Swenson Spreader LLC. Electrical or hydraulic components are not to be disassembled without the express written permission of Swenson Spreader LLC. Defective parts returned to Swenson Spreader LLC must be accompanied by the following information: spreader model, serial number, date installed and dealer from whom purchased.

Purchaser accepts these terms and warranty limitations unless the product is returned within fifteen days for full refund of purchase price.

IMPORTANT INFORMATION ENCLOSED



SWENSON SPREADER LLC
P.O. BOX 127
LINDENWOOD, ILLINOIS 61049-0127

PHONE: (815)393-4455
TOLL FREE: (888)825-7323
SALES & SERVICE FAX: (866)310-0300

email: swensonsales@swensonspreader.com
website: www.swensonspreader.com

